

LOC I-PUB	APP CRS	Rwy Ldg	10496
109.5	080°	TDZE	4671
		Apt Elev	4729

ILS or LOC RWY 8R

PUEBLO MEML (PUB)

DME required.

⚠

⚠

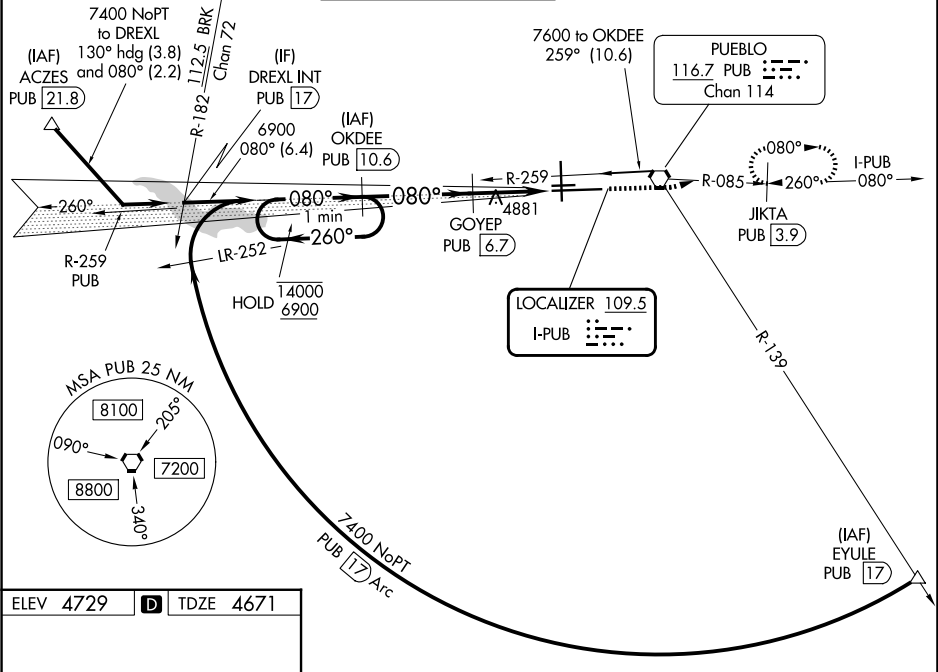
Circling NA for Cat E west of Rwy 17-35. Autopilot coupled approach NA below 4950. Procedure turn NA for Cat E aircraft. DME from PUB VORTAC, simultaneous reception of I-PUB and PUB DME required. For inop ALS, increase S-ILS 8R Cat E visibility to ¾ SM and S-LOC 8R Cat E visibility to 1 ½ SM.

MALSR

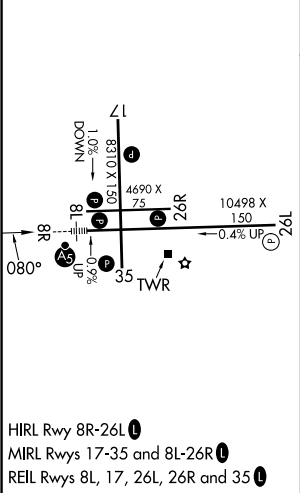
AS

MISSED APPROACH: Climb to 7000 on heading 070° and on PUB VORTAC R-085 to JIKTA/ PUB 3.9 DME and hold, continue climb-in-hold to 7000.

ATIS	DENVER APP CON ★	PUEBLO TOWER ★	GND CON	CLNC DEL	UNICOM
125.25	120.1 290.5	119.1 (CTAF) 257.8	121.9	120.9	122.95



ELEV 4729	D	TDZE 4671
-----------	---	-----------



One Minute Holding Pattern				
OKDEE PUB 10.6				
7000				
hdg 070°				
*LOC only				
14000 6900				
260° 080°				
6900				
GS 3.00° TCH 61				
3.9 NM 1.4 NM 1.5 NM				
CATEGORY	A	B	C	D
S-ILS 8R	4871-1½ 200 (200-½)			
S-LOC 8R	5200-1½ 529 (500-½)	5200-1 529 (500-1)		
CIRCLING	5340-1 611 (700-1)	5580-2½ 851 (900-2½)	5800-3 1071 (1100-3)	