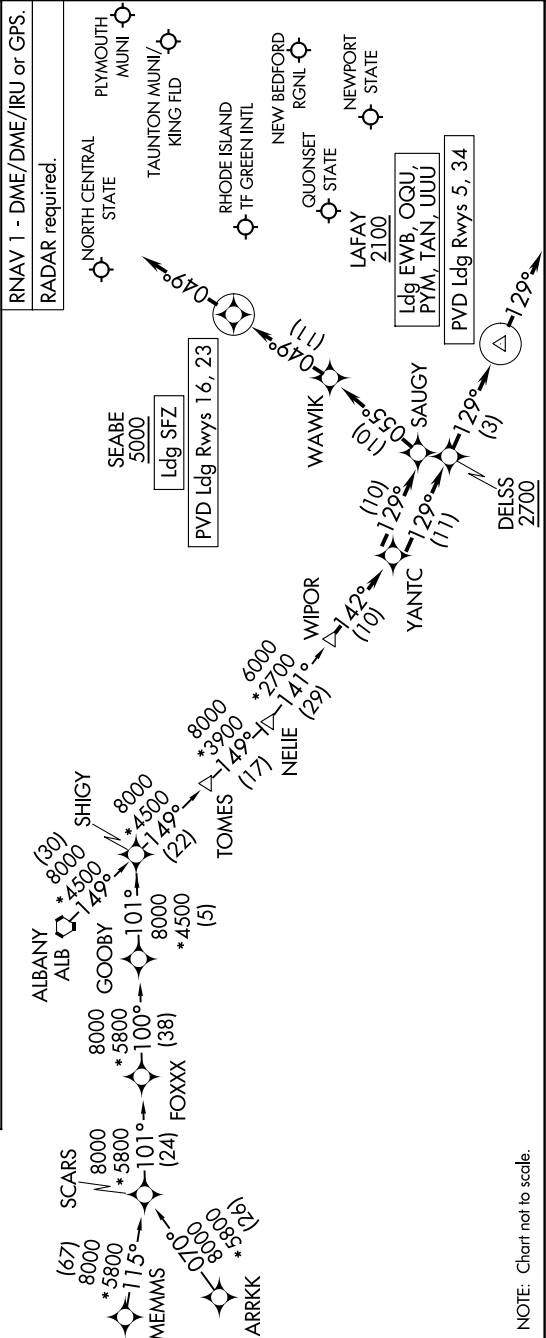


NE-1, 07 AUG 2025 to 04 SEP 2025

ARRIVAL ROUTE DESCRIPTION
ALBANY TRANSITION (ALB.WIPOR4) ARRKK TRANSITION (ARRKK.WIPOR4) MEMMS TRANSITION (MEMMS.WIPOR4) PVD: From WIPOR on track 142° to YANTC. LANDING PVD RUNWAYS 5, 34: From YANTC on track 129° to cross DELSS at or above 2700, then on track 129° to cross LAFAY at or above 2100, then on track 129°. Expect RADAR vectors to final approach course. LANDING PVD RUNWAYS 16, 23: From YANTC on track 129° to SAUGY, then on track 049° to WAWIK, then on track 049° to cross SEABE at or above 5000, then on track 049°. Expect RADAR vectors to final approach course. LANDING TAN/EWB/UUU/PYM/OQU: From WIPOR on track 142° to YANTC, then on track 129° to cross DELSS at or above 2700, then on track 129° to cross LAFAY at or above 2100, then on track 129°. Expect RADAR vectors to final approach course. LANDING SFZ: From WIPOR on track 142° to YANTC, then on track 129° to SAUGY, then on track 049° to WAWIK, then on track 049° to cross SEABE at or above 5000, then on track 049°. Expect RADAR vectors to final approach course.



NE-1, 07 AUG 2025 to 04 SEP 2025