

VOR/DME PVD 115.6 Chan 103	APP CRS 041°	Rwy Idg 8700 TDZE 53 Apt Elev 54
--	------------------------	---

VOR RWY 5

RHODE ISLAND TF GREEN INTL (PVD)

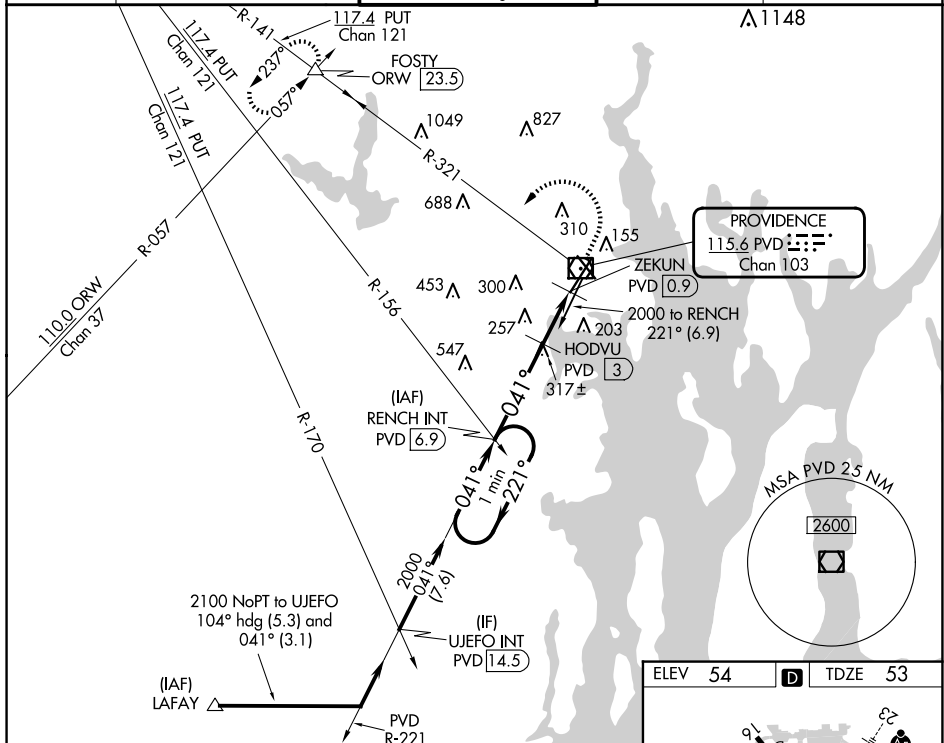
▼ For inop ALS, increase S-5 Cat C/D visibility to 2 SM. When control tower closed: increase S-5 Cats A and B visibility to $\frac{3}{4}$ SM, and S-5 Cats C and D visibility to $1\frac{3}{4}$ SM. When control tower closed: HODVU fix minimums: increase S-5 Cats A and B visibility to $\frac{3}{4}$ SM, and S-5 Cats C and D visibility to $1\frac{1}{4}$ SM.

ALSF-2



MISSED APPROACH: Climb to 800 then climbing left turn to 2500 on PVD VOR/DME R-321 to FOSTY INT/ORW 23.5 DME and hold.

D-ATIS 124.2	PROVIDENCE APP CON ★ 123.675 244.875	PROVIDENCE TOWER ★ 120.7 (CTAF) 0 257.8	GND CON 121.9 348.6	CLNC DEL 126.65 348.6
-----------------	---	--	------------------------	--------------------------



One Minute Holding Pattern

RENCH INT PVD [6.9]

2000

221°

041°

041°

3.00° TCH 55

760

HODVU PVD [3]

PVD [2.3]

800

2500

FOSTY

PVD R-321

△

ZEKUN PVD [0.9]

3.8 NM

0.7 NM

1.4 NM

CATEGORY	A	B	C	D
S-5	760/24	707 (800-1/2)	760-1 5/8	707 (800-1 5/8)
C CIRCLING	760-1	706 (800-1)	760-2 706 (800-2)	860-2 1/2 806 (900-2 1/2)

HODVU FIX MINIMUMS

S-5	560/24	507 (600-1/2)	560/55	507 (600-1)
C CIRCLING	560-1 506 (600-1)	640-1 586 (600-1)	640-1 1/2 586 (600-1 1/2)	860-2 1/2 806 (900-2 1/2)

