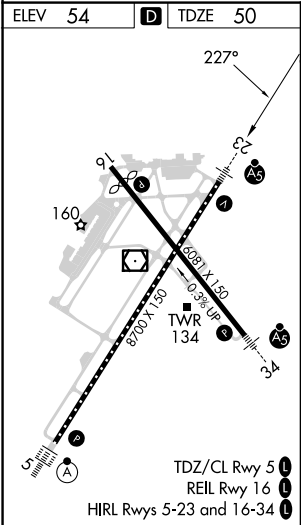
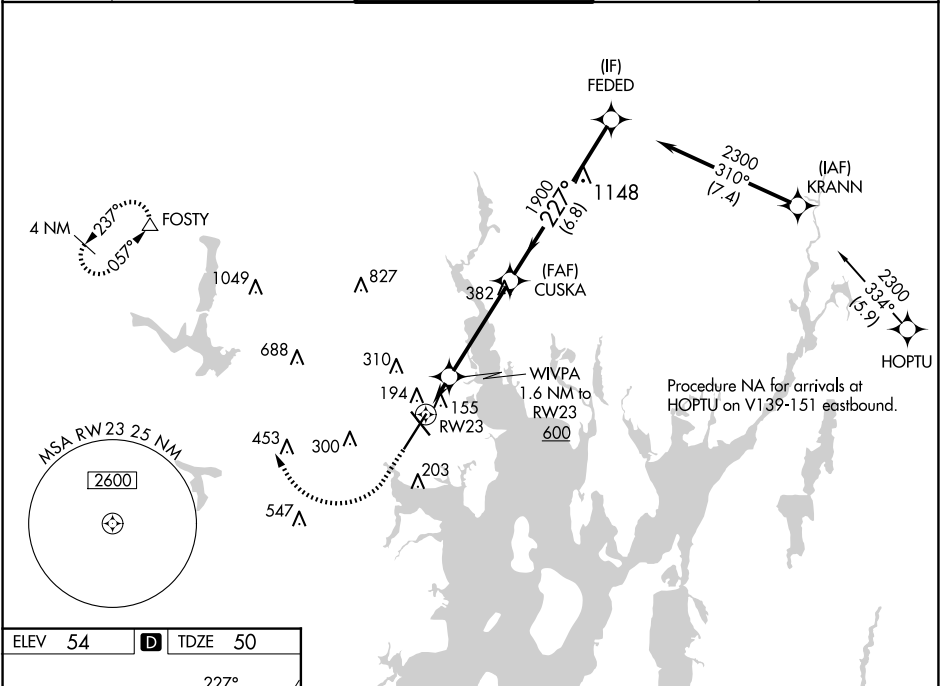










WAAS CH 93823 W23A	APP CRS 227°	Rwy Idg TDZE Apt Elev	8700 50 54
--	------------------------	-----------------------------	---------------------------------------

RNAV (GPS) Y RWY 23

RHODE ISLAND TF GREEN INTL (PVD)

RNP APCH - GPS.		MALSR	MISSED APPROACH: Climb to 1700 then climbing right turn to 2500 direct FOSTY and hold.	
For uncompensated Baro-VNAV systems, LNAV/VNAV NA below -16°C or above 54°C. Inop ALS, increase LNAV Cats C/D visibility to RVR 6000. *RVR 1800 authorized with use of FD or AP or HUD to DA.				
D-ATIS 124.2	PROVIDENCE APP CON ★ 123.675 244.875	PROVIDENCE TOWER ★ 120.7 (CTAF) 257.8	GND CON 121.9 348.6	CLNC DEL 126.65 348.6



1700 		2500 		FOSTY 		VGSI and RNAV glidepath not coincident (VGSI Angle 3.00/TCH 41).			
RW23 		WVPA 1.6 NM to RW23 		CUSKA 1900 		FEDED 2300 		GP 3.00° TCH 51	
1.6 NM		4.1 NM		6.8 NM					
CATEGORY		A		B		C		D	
LPV DA *		250/24		200 (200-½)					
LNAV/VNAV DA		355/24		305 (400-½)					
LNAV MDA		460/24		410 (500-½)		460/40		410 (500-¾)	
 CIRCLING		560-1 506 (600-1)		640-1 586 (600-1)		640-1½ 586 (600-1½)		860-2½ 806 (900-2½)	