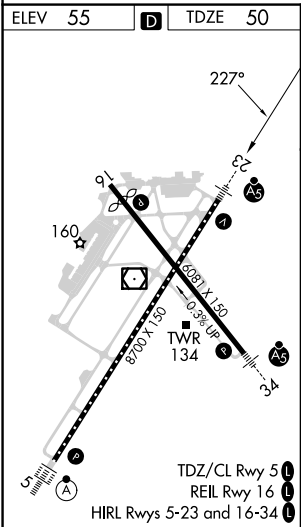
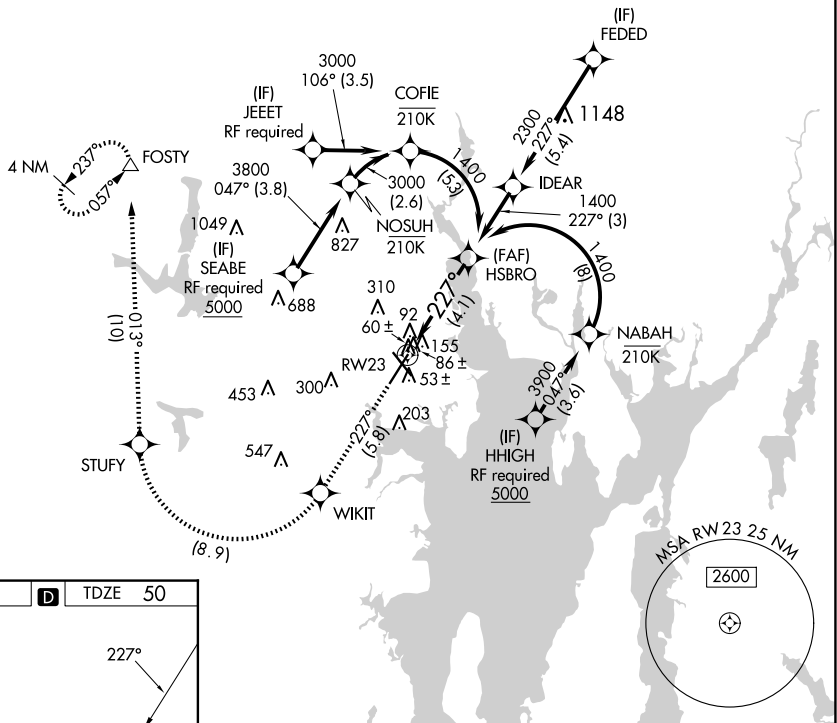


|   |                             |                  |
|---|-----------------------------|------------------|
| APP CRS<br>227°   | Rwy Idg<br>TDZE<br>Apt Elev | 8700<br>50<br>55 |
| RNAV (RNP) Z RWY 23<br>RHODE ISLAND TF GREEN INTL (PVD) |                             |                  |

|  |  |  |
|--|--|--|
| <div><div>▼</div><div>For uncompensated Baro-VNAV systems, procedure NA below -15°C (5°F) or above 48°C (118°F). RF required. For inop MALSR, increase RNP 0.30 all Cats visibility to 1¼. GPS Required.</div></div> | <div><div>MALSR</div><div></div></div> | <div>Climb to 2500 on track 227° to WIKIT and right turn to STUFY and on track 013° to FOSTY and hold.</div> |
|--|--|--|

|                 |   |  |                        |                          |
|-----------------|---|--|------------------------|--------------------------|
| D-ATIS<br>124.2 | PROVIDENCE APP CON ★<br>123.675 244.875 | PROVIDENCE TOWER ★<br>120.7 (CTAF) 257.8 | GND CON<br>121.9 348.6 | CLNC DEL<br>126.65 348.6 |
|-----------------|---|--|------------------------|--------------------------|

RADAR REQUIRED



|   |                    |               |         |           |               |
|---|--------------------|---------------|---------|-----------|---------------|
| 2500<br>↑<br>fr 227°  | WIKIT<br>          | <br>STUFY<br> | fr 013° | FOSTY<br> | HSBRO<br>1400 |
| VGSI and RNAV glidepath not coincident<br>(VGSI Angle 3.00/TCH 41).   |                    |               |         |           |               |
| <p>RW23</p> <p>227°</p> <p>See planview for multiple IF locations.</p> <p>1400</p> <p>GP 3.00°<br/>TCH 51</p> |                    |               |         |           |               |
| CATEGORY  | A                  | B             | C       | D         |               |
| RNP 0.30 DA   | 434/40 384 (400-¾) |               |         |           |               |
| AUTHORIZATION REQUIRED  |                    |               |         |           |               |