

WAAS CH <b>86218</b> <b>W05A</b>	APP CRS <b>047°</b>	Rwy Idg TDZE Apt Elev	<b>8700</b> <b>53</b> <b>54</b>
--	------------------------	-----------------------------	---------------------------------------

RNAV (GPS) RWY 5

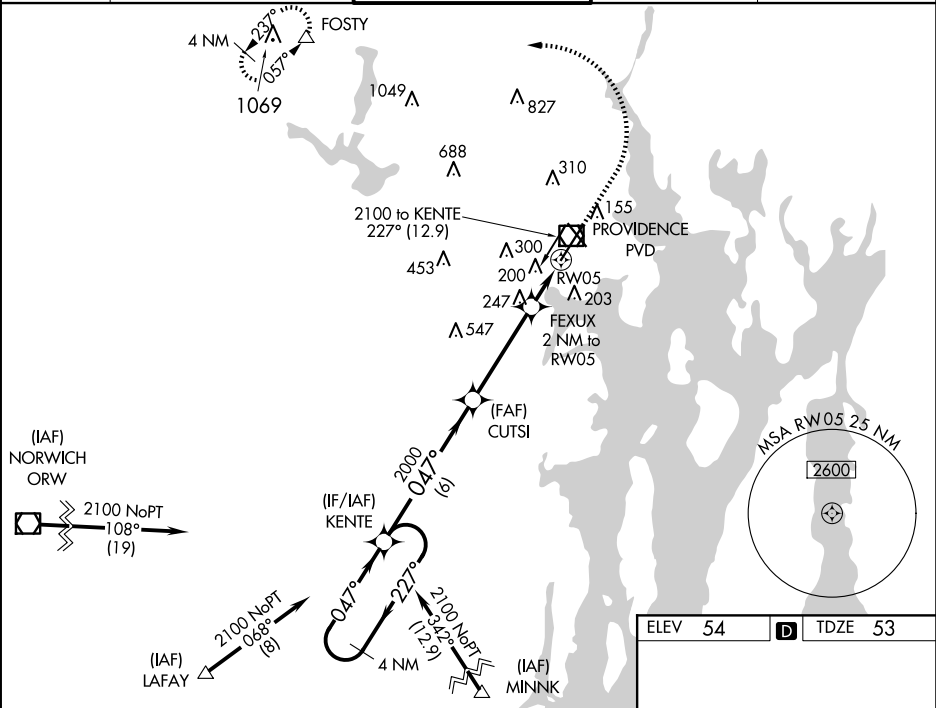
RHODE ISLAND TF GREEN INTL (PVD)

▼ For uncompensated Baro-VNAV systems, LNAV/VNAV NA below -16°C (3°F) or above 54°C (130°F). DME/DME RNP-0.3 NA. When tower closed: increase LPV, LNAV/VNAV all Cats and LNAV Cats A and B visibilities to ¾ SM, and LNAV Cats C and D visibility to 1 SM. When control tower closed: For inop ALS, increase LNAV Cats C and D visibility to 1 ¾ SM.

ALSF-2

MISSED APPROACH: Climb to 800 then climbing left turn to 2500 direct FOSTY and hold.

D-ATIS <b>124.2</b>	PROVIDENCE APP CON ★ <b>123.675 244.875</b>	PROVIDENCE TOWER ★ <b>120.7 (CTAF) 0 257.8</b>	GND CON <b>121.9 348.6</b>	CLNC DEL <b>126.65 348.6</b>
------------------------	--	---	-------------------------------	---------------------------------



4 NM Holding Pattern		KENTE	CUTSI	FEXUX	RW05
2100		227°	047°	2000	2100
GP 3.00° TCH 53					
6 NM		4 NM	0.9	1.1	
CATEGORY	A	B	C	D	
LPV DA		253/18	200 (200-½)		
LNAV/VNAV DA		361/24	308 (400-½)		
LNAV MDA	460/24	407 (500-½)	460/40	407 (500-¾)	
CIRCLING	560-1 506 (600-1)	640-1 586 (600-1)	640-1½ 586 (600-1½)	860-2½ 806 (900-2½)	

