

LOC/DME I-PVD	APP CRS	Rwy Idg
109.3	047°	8700
Chan 30		TDZE 53
		Apt Elev 54

ILS RWY 5 (CAT II & III)

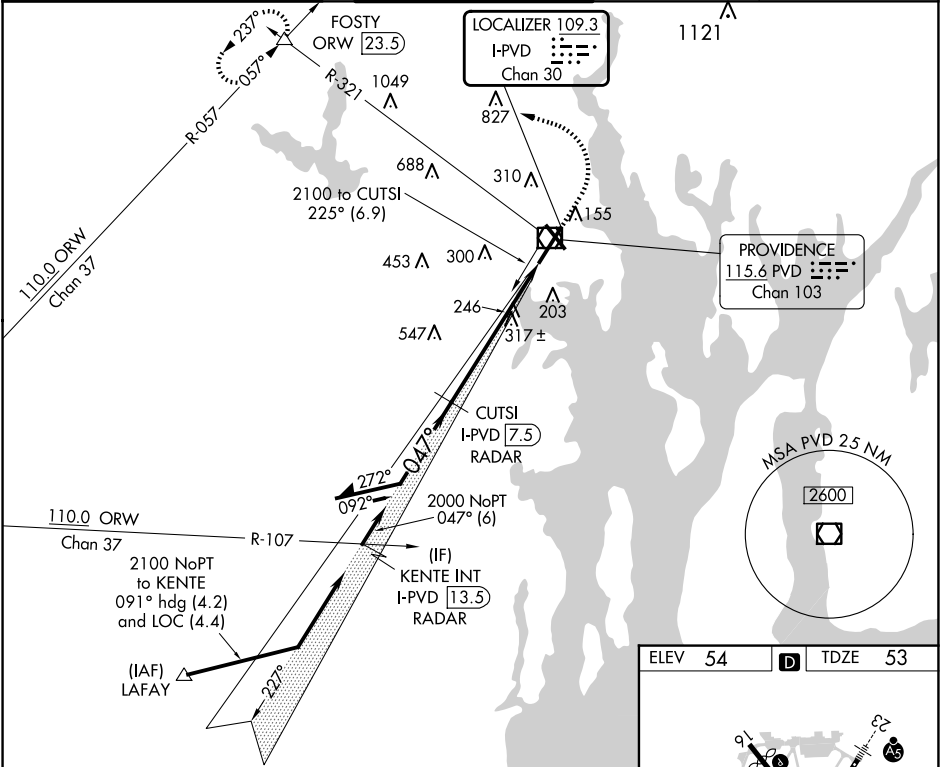
RHODE ISLAND TF GREEN INTL (PVD)

Procedure NA when control tower closed.

ALSIF-2

MISSED APPROACH: Climb to 800 then climbing left turn to 2500 on heading 270° and PVD VOR/DME R-321 to FOSTY INT/ORW 23.5 DME and hold.

D-ATIS	PROVIDENCE APP CON ★	PROVIDENCE TOWER ★	GND CON	CLNC DEL
124.2	123.675 244.875	120.7 (CTAF) 257.8	121.9 348.6	126.65 348.6



Remain within 10 NM

CUTSI I-PVD (7.5) RADAR

2100 → 227°

2000 → 047°

GS 3.00° TCH 53

2000

6 NM

1008'

CATEGORY	A	B	C	D
S-ILS 5	CAT II	RA 106/12	100 DA 153	
S-ILS 5		CAT IIIa	RVR 700	
S-ILS 5		CAT IIIb	RVR 600	
S-ILS 5		CAT IIIc	NA	

CATEGORY II & III ILS - SPECIAL AIRCREW & AIRCRAFT CERTIFICATION REQUIRED

ELEV 54 D TDZE 53

The inset chart shows the airport layout with the runway (RWY 5) and taxiway (TWY 134). It also shows the surrounding terrain with elevations of 160, 130, and 134. The chart is oriented with the runway heading of 047°.

TDZ/CL Rwy 5 1
REIL Rwy 16 1
HIRL Rwy 5-23 and 16-34 1