

LOC/DME I-ARJ	APP CRS	Rwy Idg	8700
109.3	227°	TDZE	50
Chan 30		Apt Elev	54

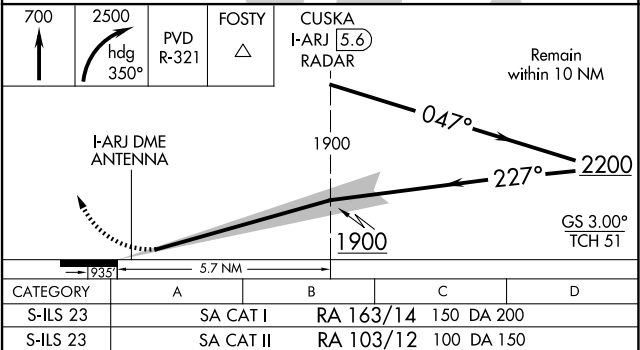
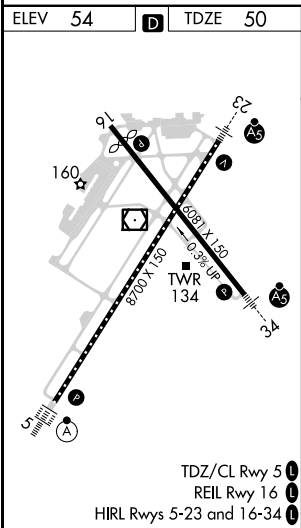
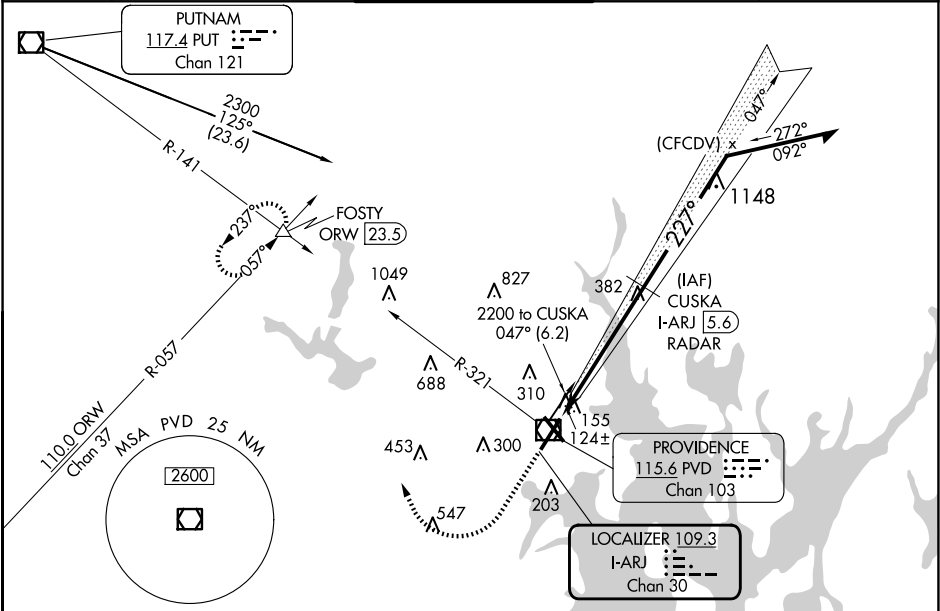
ILS RWY 23 (SA CAT I & II)  
RHODE ISLAND TF GREEN INTL (PVD)

DME or RADAR required for procedure entry.

MALSR

MISSED APPROACH: Climb to 700 then climbing right turn to 2500 on heading 350° and PVD VOR/DME R-321 to FOSTY INT/ ORW 23.5 DME and hold.

D-ATIS	PROVIDENCE APP CON *	PROVIDENCE TOWER *	GND CON	CLNC DEL
124.2	123.675 244.875	120.7 (CTAF) 257.8	121.9 348.6	126.65 348.6



SA CATEGORY I & II ILS - SPECIAL AIRCREW & AIRCRAFT CERTIFICATION REQUIRED

NE-1, 07 AUG 2025 to 04 SEP 2025

NE-1, 07 AUG 2025 to 04 SEP 2025