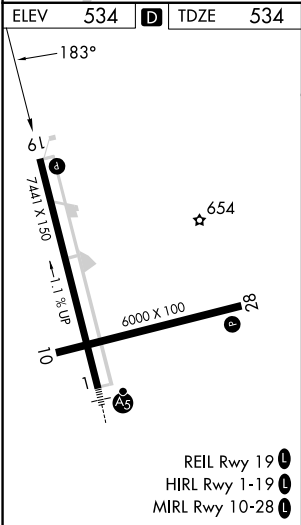
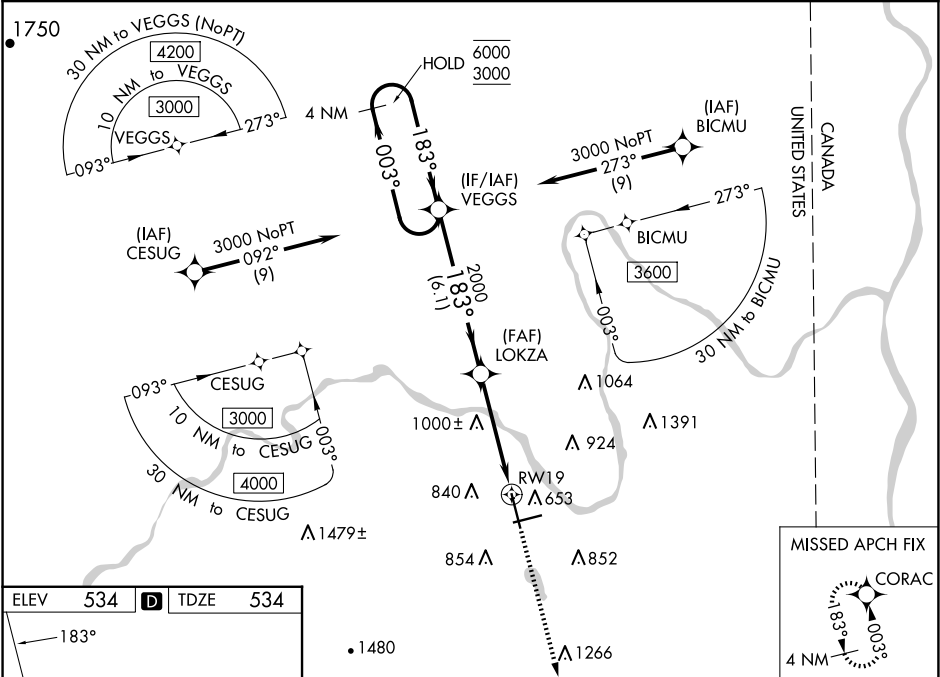


WAAS CH <b>99712</b> <b>W19A</b>	APP CRS <b>183°</b>	Rwy Idg TDZE Apt Elev	<b>7441</b> <b>534</b> <b>534</b>
--	------------------------	-----------------------------	---

RNAV (GPS) RWY 19

PRESQUE ISLE INTL (PQI)

RNP APCH - GPS.				
<div><div><div>▼</div><div>▲</div><div>❄</div></div><div>-36°C</div></div> <div>Rwy 19 helicopter visibility reduction below ¾ SM NA. For uncompensated Baro-VNAV systems, LNAV/VNAV NA below -16°C or above 54°C. Circling Rwy 10 NA at night. When local altimeter setting not received, use HUL altimeter setting: increase LPV DA to 1019 feet and all visibilities ½ SM; increase LNAV/VNAV DA to 1205 feet and all visibilities ½ SM; increase all MDAs 100 feet and LNAV visibility Cats B, C, and D ½ SM, and Circling visibility Cats B and C ½ SM and Cat D ¼ SM. Baro-VNAV and VDP NA when using HUL altimeter setting.</div>	MISSED APPROACH: Climb to 3400 direct CORAC and hold.			
AWOS-3PT 118.025	BOSTON CENTER 124.75 239.05	CLNC DEL 121.6	UNICOM 122.8 (CTAF)	122.6 0



3400 ↑ CORAC		VGSI and RNAV glidepath not coincident (VGSI Angle 3.70/TCH 50).		4 NM Holding Pattern	
RW19		LOKZA		VEGGS	
1.7 NM to RW19		2000		003° → 6000 ← 183° 3000	
1.7 NM		2.7 NM		6.1 NM	
183°		2000		GP 3.00° TCH 55	
CATEGORY	A	B	C	D	
LPV DA	929-1⅛		395 (400-1⅛)		
LNAV/ VNAV DA	1115-1¾		581 (600-1¾)		
LNAV MDA	1240-1	706 (800-1)	1240-2		706 (800-2)
CIRCLING	1240-1	706 (800-1)	1320-2¼ 786 (800-2¼)	1380-2¾ 846 (900-2¾)	