

LOC I-PQI <u>108.7</u>	APP CRS 003°	Rwy Idg TDZE Apt Elev	7441 479 534
----------------------------------	------------------------	-----------------------------	---

ILS or LOC RWY 1
PRESQUE ISLE INTL (PQI)

DME required.

⚠ Circling Rwy 10 NA at night. For inop ALS, increase S-LOC 1 Cats C and D visibility to 1% SM. DME from PQI VOR/DME. Simultaneous reception of HPQI and PQI DME required. When local altimeter setting not received, use HUL altimeter setting; increase S-LS 1 Cat to 769 feet; increase all MDAs 100 feet and S-LOC 1 visibility Cats C and D ¼ SM, and Circling visibility Cat C ½ SM and Cat D ¼ SM. For inop ALS when using HUL altimeter setting, increase S-LS 1 all Cats visibility to ½ SM; and increase S-LOC 1 Cats C and D visibility to 1% SM. VDP NA when using HUL altimeter setting.

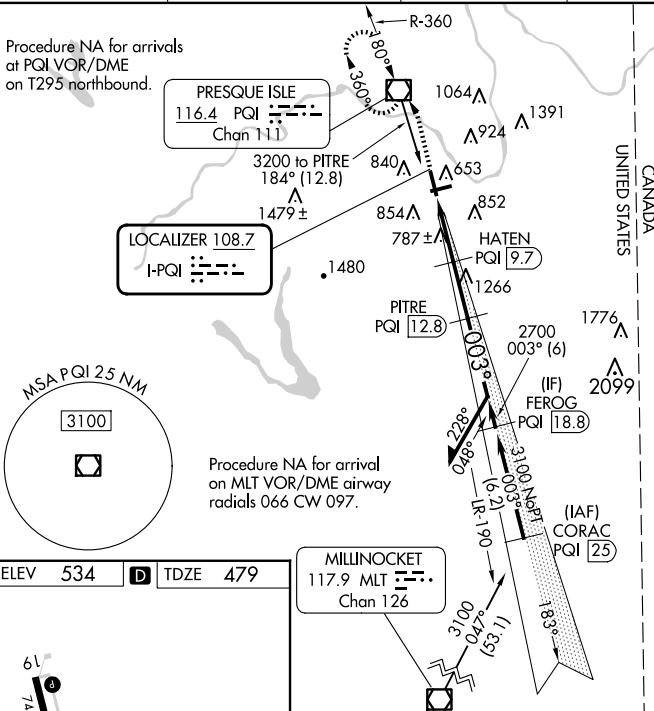
MALSR



MISSED APPROACH:
Climb to 1100 then
climbing left turn to
3000 direct PQI
VOR/DME and hold,
continue climb-in-hold
to 3000.

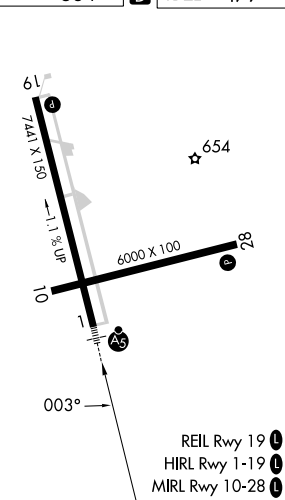
AWOS-3PT 118,025	BOSTON CENTER 124.75 239.05	CLNC DEL 121.6	UNICOM 122.8 (CTAF)	122.6
----------------------------	---------------------------------------	--------------------------	-------------------------------	--

Procedure NA for arrivals
at PQI VOR/DME
on T295 northbound.

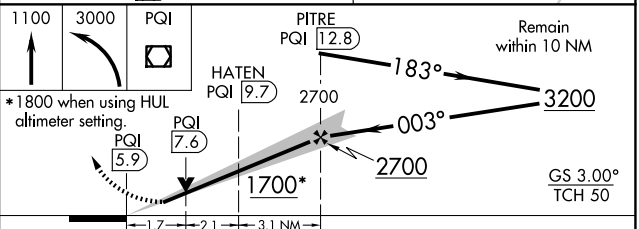



CANADA
UNITED STATES

ELEV	534	D	TDZE	479
------	-----	----------	------	-----



MILLINOCKET
117.9 MLT 
Chan 126



CATEGORY	A	B	C	D
S-ILS 1	679-½ 200 (200-½)			
S-LOC 1	1040-½ 561 (600-½)	1040-1¼ 561 (600-1¼)		
 CIRCLING	1140-1 606 (700-1)	1160-1 626 (700-1)	1320-2¼ 786 (800-2¼)	1380-2¾ 846 (900-2¾)

PRESQUE ISLE, MAINE
Amdt 7B 26DEC24

46° 41'N-68° 03'W

PRESQUE ISLE INTL (PQI)
ILS or LOC RWY 1