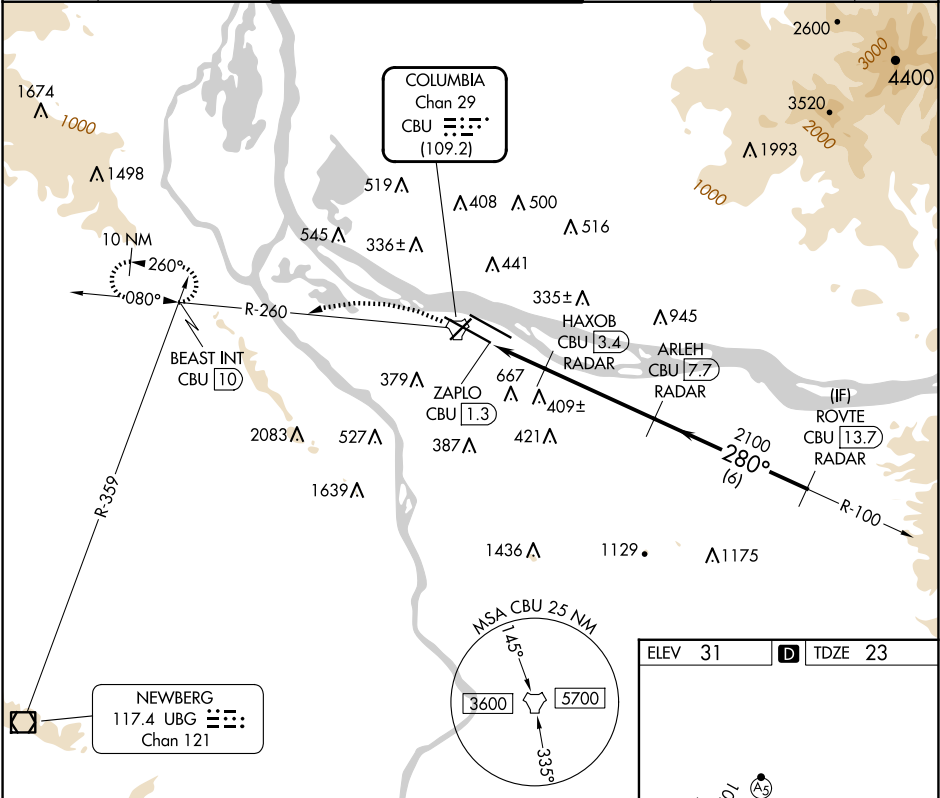


TACAN CBU Chan 29 (109.2)	APP CRS 280°	Rwy ldg TDZE 23 Apt Elev 31
---	------------------------	---

TACAN RWY 28L
PORTLAND INTL (PDX)

RADAR required for procedure entry.		MALSR	MISSED APPROACH: Climbing left turn to 4000 on CBU TACAN R-260 to BEAST INT/CBU 10 DME and hold, continue climb-in-hold to 4000.
For inop ALS, increase S-28L Cat C/D/E visibility to 1¾ SM.		AS	

D-ATIS 128.35 269.9	PORTLAND APP CON 124.35 299.2	PORTLAND TOWER Rwy 10L-28R 118.7 257.8 Rwys 3-21, 10R-28L 123.775 251.125	GND CON 121.9 348.6	CLNC DEL 120.125 318.1	CPDLC
---	---	---	-------------------------------	----------------------------------	-------



4000 CBU R-260		BEAST INT		VGSI and descent angles not coincident (VGSI Angle 3.00/TCH 72).		ROVTE CBU [13.7] RADAR	
CBU TACAN		HAXOB CBU [3.4] RADAR		ARLEH CBU [7.7] RADAR		3000	
ZAPLO CBU [1.3]		≤ 3.09° TCH 60		2100		280°	
2.2 NM		4.3 NM		6 NM			
CATEGORY	A	B	C	D	E		
S-28L	660/24	637 (700-½)	660-1¾	637 (700-1¾)			
CIRCLING	740-1 709 (800-1)	760-1 729 (800-1)	1060-3	1029 (1100-3)	1140-3 1109 (1200-3)		

