

WAAS CH 40004 W10A	APP CRS 103°	Rwy Idg 11000 TDZE 24 Apt Elev 31
--	------------------------	--

RNAV (GPS) Y RWY 10R

PORTLAND INTL (PDX)

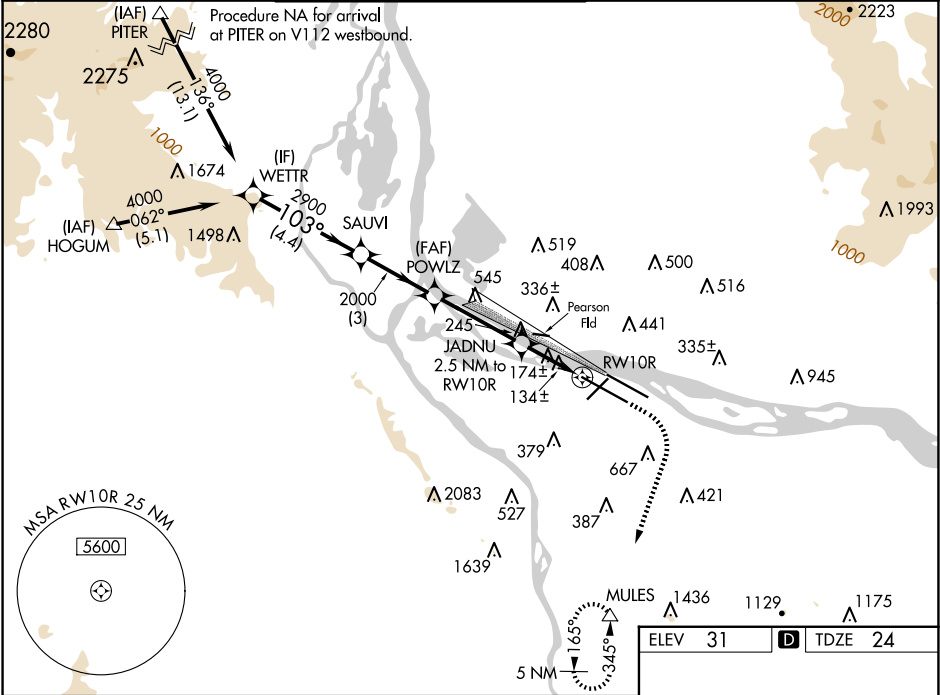
⚠

For uncompensated Baro-VNAV systems, LNAV/VNAV NA below -1.5°C (5°F) or above 54°C (130°F). DME/DME RNP-0.3 NA. Simultaneous approach authorized with Rwy 10L. Use of FD or AP providing RNAV track guidance required during simultaneous operations. LNAV procedure NA during simultaneous operations.

ALSF-2

MISSED APPROACH: Climb to 440 then climbing right turn to 5000 direct MULES and hold.

D-ATIS 128.35 269.9	PORTLAND APP CON 124.35 299.2	PORTLAND TOWER Rwy 10L-28R 118.7 257.8 Rwys 3-21, 10R-28L 123.775 251.125	GND CON 121.9 348.6	CLNC DEL 120.125 318.1	CPDLC
---	---	---	-------------------------------	----------------------------------	-------



VGSI and RNAV glidepath not coincident (VGSI Angle 3.00/TCH 71).				
<div><div>WETTR</div><div>SAUVI</div><div>POWLZ</div><div>JADNU</div><div>MULES</div></div>				
<div><div>4000</div><div>2900</div><div>2000</div><div>2000</div><div>860</div></div>				
<div><div>GP 3.00°</div><div>TCH 53</div><div>4.4 NM</div><div>3 NM</div><div>3.5 NM</div><div>1.4</div><div>1.1</div></div>				
CATEGORY	A	B	C	D
LPV DA	224/18		200 (200-½)	
LNAV/VNAV DA	329/24		305 (300-½)	
LNAV MDA	440/24		416 (500-½)	
CIRCLING	720-1		1060-3	
	689 (700-1)		1029 (1100-3)	

ELEV 31

TDZE 24

REIL Rwys 3 and 21

TDZ/CL Rwy 10R

MIRL Rwy 3-21

HIRL Rwys 10L-28R and 10R-28L

NW-1, 07 AUG 2025 to 04 SEP 2025

NW-1, 07 AUG 2025 to 04 SEP 2025