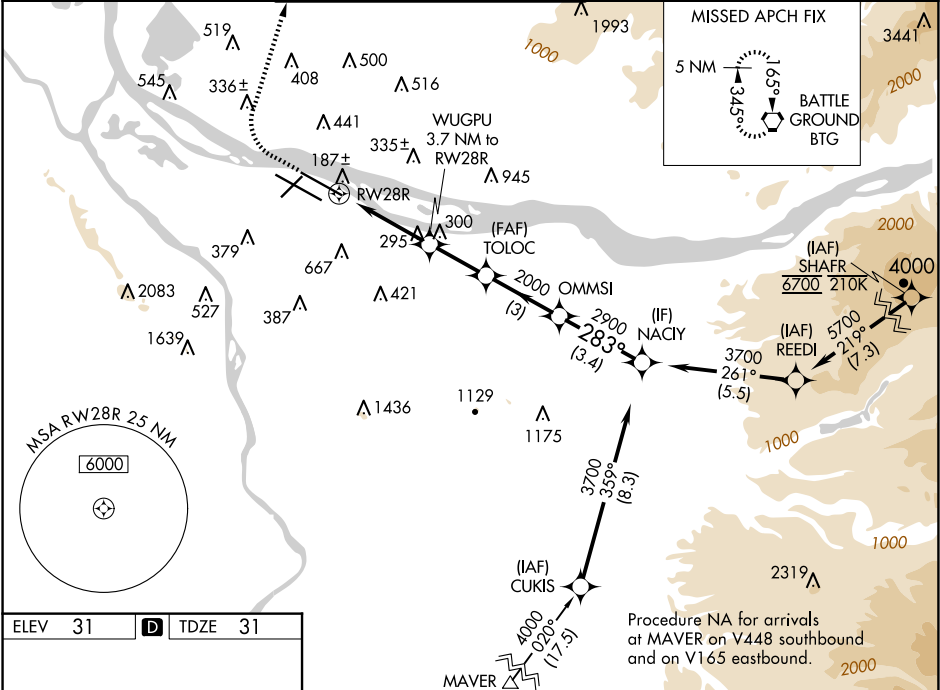


WAAS CH <b>60905</b> <b>W28A</b>	APP CRS <b>283°</b>	Rwy Idg <b>9290</b> TDZE <b>31</b> Apt Elev <b>31</b>
--	------------------------	---

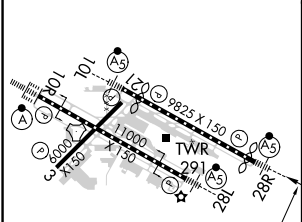
RNAV (GPS) X RWY 28R  
PORTLAND INTL (PDX)

<p><b>⚠</b> For uncompensated Baro-VNAV systems, LNAV/VNAV NA below -6°C (22°F) or above 54°C (130°F). Simultaneous approach authorized. LNAV procedure NA during simultaneous operations. DME/DME RNP-0.3 NA. Use of FD or AP providing RNAV track guidance required during simultaneous operations. For inop ALS increase LNAV Cat C/D visibility to RVR 6000.</p>	<p>MALSR</p> <p></p>	<p>MISSED APPROACH: Climb to 600 then climbing right turn to 4200 direct BTG VORTAC and hold, continue climb-in-hold to 4200.</p>
--	----------------------	---




D-ATIS <b>128.35</b> <b>269.9</b>	PORTLAND APP CON <b>124.35 299.2</b>	PORTLAND TOWER Rwy 10L-28R <b>118.7 257.8</b> Rwys 3-21, 10R-28L <b>123.775 251.125</b>	GND CON <b>121.9 348.6</b>	CLNC DEL <b>120.125 318.1</b>	CPDLC
---	---	---	-------------------------------	----------------------------------	-------



ELEV 31	<b>D</b>	TDZE 31
---------	----------	---------



REIL Rwys 3 and 21  
TDZ/CL Rwy 10R  
MIRL Rwy 3-21  
HIRL Rwys 10L-28R and 10R-28L

600	4200	BTG	VGSi and RNAV glidepath not coincident (VGSi Angle 3.00/TCH 70).			
						
*LNAV only			WUGPU 3.7 NM to RW28R	TOLOC 2000	OMMSI	NACIY 3700

NW-1, 07 AUG 2025 to 04 SEP 2025

NW-1, 07 AUG 2025 to 04 SEP 2025