

APP CRS
283°

Rwy Idg
TDZE
31

Apt Elev
31

RNAV (RNP) Z RWY 28R

PORTLAND INTL (PDX)

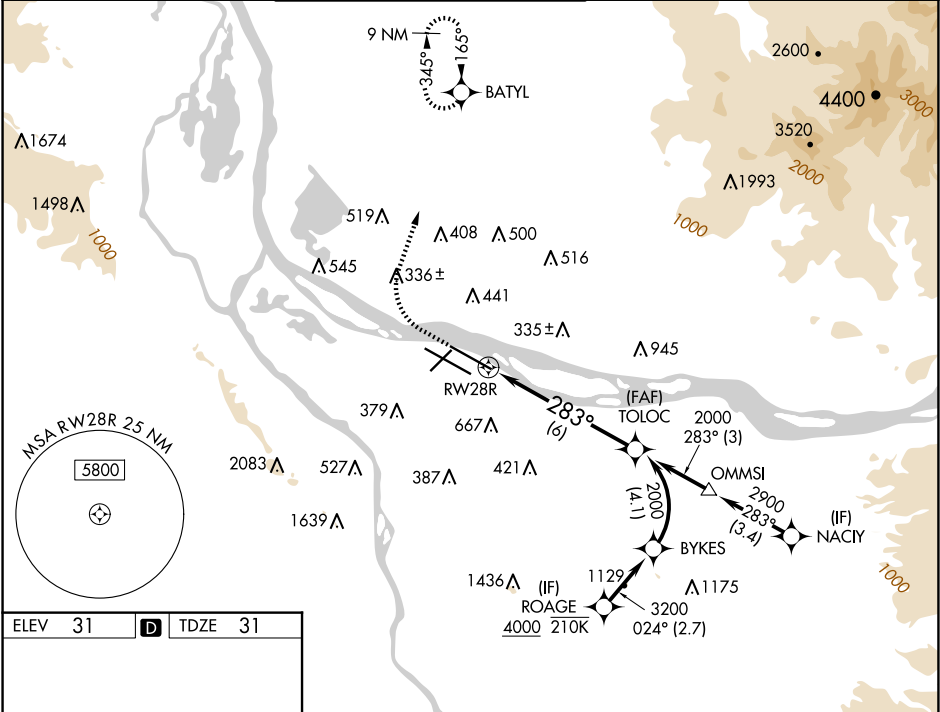
RNP AR APCH - GPS. Authorization required. From BYKES: RF

For uncompensated Baro-VNAV systems, procedure NA below -5°C or above 54°C. Simultaneous approach authorized. For inop ALS increase RNP 0.10 all Cats visibility to RVR 4500, increase RNP 0.20 all Cats visibility to RVR 5500, and increase RNP 0.30 all Cats visibility to RVR 6000.

MALSR

MISSED APPROACH: Climb to 600 then climbing right turn to 4400 direct BATYL and hold, continue climb-in-hold to 4400.

D-ATIS 128.35 269.9	PORTLAND APP CON 124.35 299.2	PORTLAND TOWER Rwy 10L-28R 118.7 257.8	Rwys 3-21, 10R-28L 123.775 251.125	GND CON 121.9 348.6	CLNC DEL 120.125 318.1	CPDLC
---------------------------	----------------------------------	--	---------------------------------------	------------------------	---------------------------	-------



ELEV 31

TDZE 31

Diagram of the approach with various altitudes and headings.

600 4400 BATYL

VGSI and RNAV glidepath not coincident (VGSI Angle 3.00°/TCH 70°).

TOLOC 2000

GP 3.00° TCH 54

CATEGORY	A	B	C	D
RNP 0.10 DA		322/24	291 (300-½)	
RNP 0.20 DA		400/35	369 (400-¾)	
RNP 0.30 DA		451/40	420 (500-¾)	

AUTHORIZATION REQUIRED