

PORTLAND, OREGON

AL-330 (FAA)

24305

APP CRS 283°	Rwy Idg 11000 TDZE 23 Apt Elev 31
------------------------	--

RNAV (RNP) Z RWY 28L

PORTLAND INTL (PDX)

RNP AR APCH - GPS. Authorization required. From DSHUT: RF.



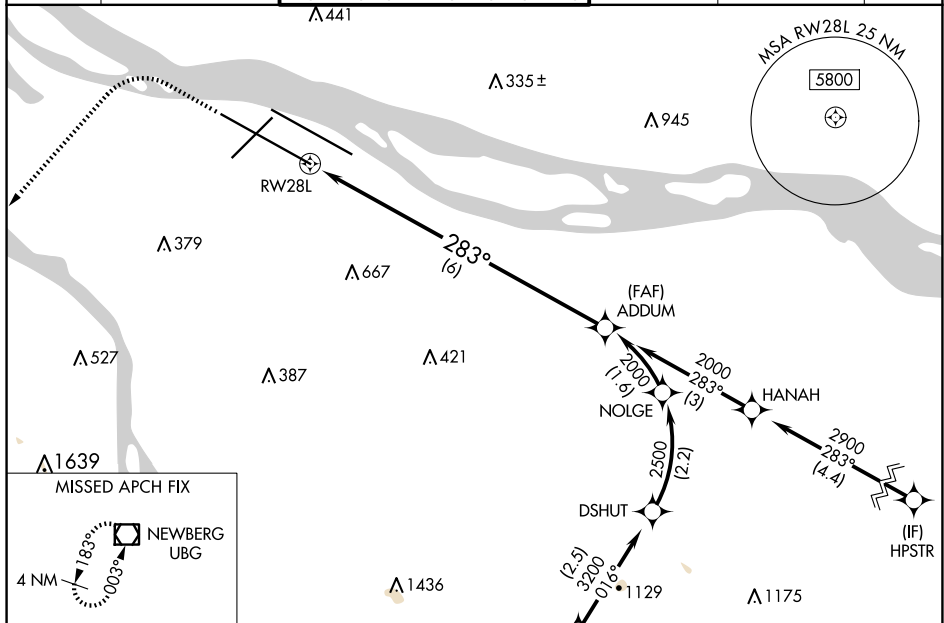
For uncompensated Baro-VNAV systems, procedure NA below -5°C or above 54°C. Simultaneous approach authorized.

MALSR

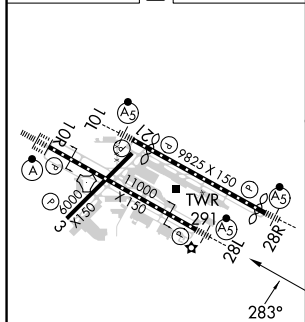


MISSED APPROACH: Climb to 2100 then climbing left turn to 4000 direct UBG VOR/DME and hold.

D-ATIS 128.35 269.9	PORTLAND APP CON 124.35 299.2	PORTLAND TOWER Rwy 10L-28R Rwy 3-21, 10R-28L 118.7 257.8 123.775 251.125		GND CON 121.9 348.6	CLNC DEL 120.125 318.1	CPDLC
---------------------------	----------------------------------	--	--	------------------------	---------------------------	-------



ELEV 31	D	TDZE 23
---------	----------	---------



REIL Rwy 3 and 21
TDZ/CL Rwy 10R
MIRL Rwy 3-21
HIRL Rwy 10L-28R and 10R-28L

2100 ↑	4000 ↖	UBG 	VGS1 and RNAV glidepath not coincident (VGS1 Angle 3.00°/TCH 72).				ADDUM 2000
See planview for multiple IF locations.							
CATEGORY	A	B	C	D			
RNP 0.30 DA	399/60 376 (400-1¼)						

AUTHORIZATION REQUIRED

PORTLAND, OREGON

Amdt 1 31OCT24

PORTLAND INTL (PDX)

45°35'N-122°36'W

RNAV (RNP) Z RWY 28L

NW-1, 07 AUG 2025 to 04 SEP 2025