

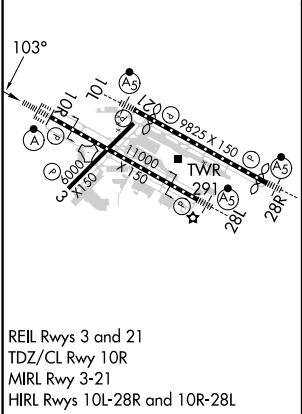
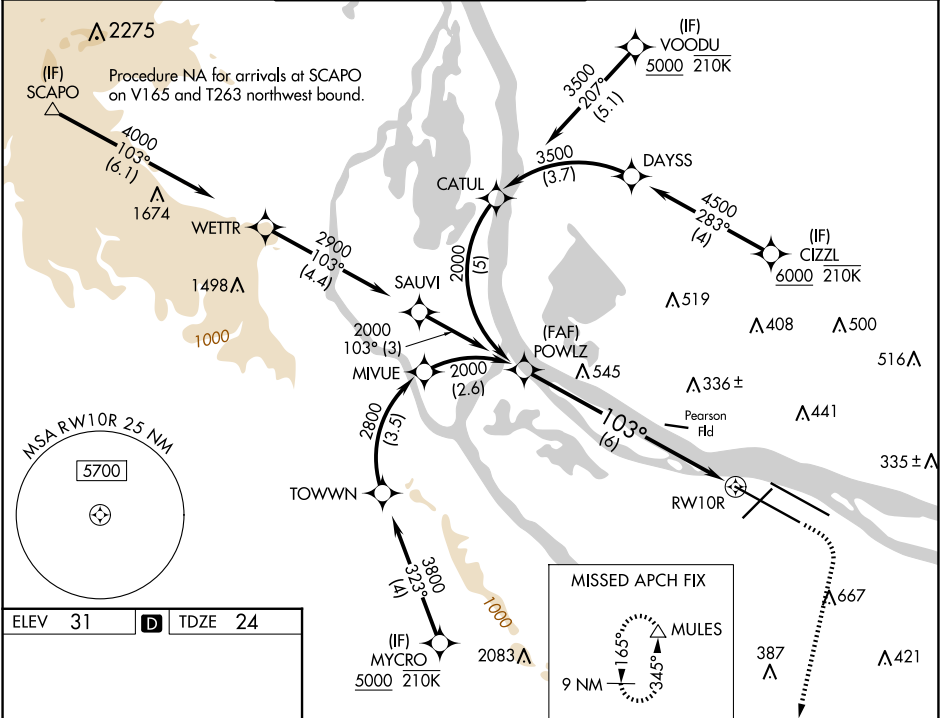
APP CRS	Rwy Idg	11000
103°	TDZE	24
	Apt Elev	31

RNAV (RNP) Z RWY 10R

PORTLAND INTL (PDX)

RNP AR APCH - GPS. Authorization required. From DAYSS, CATUL, or TOWNN: RF.	ALSF-2 	MISSED APPROACH: Climb to 440 then climbing right turn to 5000 direct MULES and hold, continue climb-in-hold to 5000.
▼ For uncompensated Baro-VNAV systems, procedure NA below -5°C or above 54°C. Simultaneous approach authorized. For inop ALS, increase RNP 0.18 all Cats visibility to RVR 4500, increase RNP 0.30 all Cats visibility to RVR 5500.		

D-ATIS 128.35 269.9	PORTLAND APP CON 124.35 299.2	PORTLAND TOWER Rwys 10L-28R 118.7 257.8 Rwys 3-21, 10R-28L 123.775 251.125	GND CON 121.9 348.6	CLNC DEL 120.125 318.1	CPDLC
---------------------------	----------------------------------	--	------------------------	---------------------------	-------



POWLZ 2000		VGSI and RNAV glidepath not coincident (VGSI Angle 3.00/TCH 71).		440	5000	MULES
2000		103°		See planview for multiple IF locations.		
GP 3.00° TCH 53		6 NM				
CATEGORY	A	B	C	D		
RNP 0.18 DA	324/24		300 (300-½)			
RNP 0.30 DA	397/35		373 (400-¾)			
AUTHORIZATION REQUIRED						