


APP CRS 283°	Rwy Idg	9290
	TDZE	31
	Apt Elev	31

RNAV (RNP) Y RWY 28R
PORTLAND INTL (PDX)

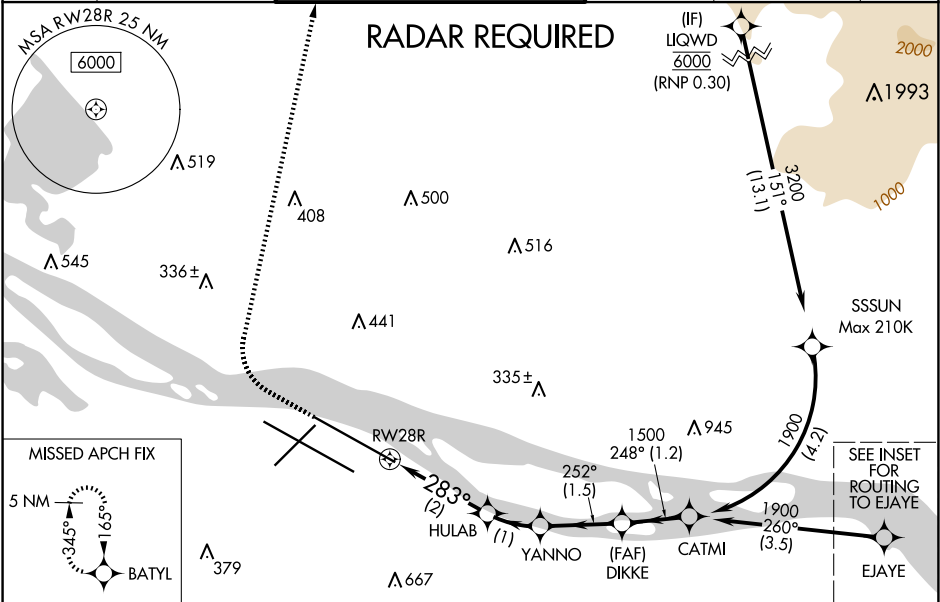
V For uncompensated Baro-VNAV systems, procedure NA below -7°C (20°F) or above 54°C (130°F). For inop MALSR, increase RNP 0.20 all Cats visibility to 1¼ mile, and increase RNP 0.30 all Cats visibility to 1½ mile. RF required. GPS required. Use of FD or AP providing RNAV track guidance required during simultaneous operations. Simultaneous approach authorized with Rwy 28L.

MALSR

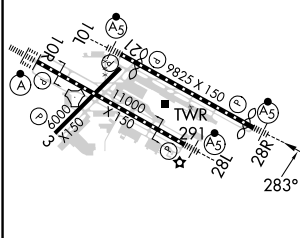


MISSED APPROACH:
Climb to 600 then climbing right turn to 4400 direct BATYL and hold, continue climb-in-hold to 4400.

D-ATIS 128.35 269.9	PORTLAND APP CON 124.35 299.2	PORTLAND TOWER Rwy 10L-28R 118.7 257.8 Rwys 3-21, 10R-28L 123.775 251.125	GND CON 121.9 348.6	CLNC DEL 120.125 318.1	CPDLC
---	---	---	-------------------------------	----------------------------------	-------

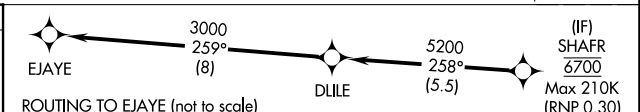


ELEV **31** **D** TDZE **31**

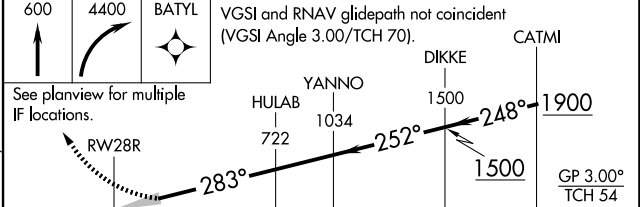


REIL Rwys 3 and 21
TDZ/CL Rwy 10R
MIRL Rwy 3-21
HIRL Rwys 10L-28R and 10R-28L

ROUTING TO EAJE (not to scale)



VGSIs and RNAV glidepath not coincident (VGSi Angle 3.00°/TCH 70°).



CATEGORY	A	B	C	D
RNP 0.20 DA		403/40	372 (400-¾)	
RNP 0.30 DA		455/50	424 (500-1)	

AUTHORIZATION REQUIRED