

24305

RNAV (RNP) Y RWY 28L

PORTLAND INTL (PDX)

MALSR

**MISSED APPROACH:** Climb to 2100 then climbing left turn to 4000 direct UBG VOR/DME and hold.

**MSA RW28L 25 NM**  
5900  
Λ 519  
Λ 545  
336 ± Λ  
Λ 441  
Λ 500  
Λ 516  
335 ± Λ  
Λ 945  
Λ 379  
667 Λ

**RADAR REQUIRED**

**MISSED APCH FIX**  
NEWBERG  
UBG  
4 NM  
183°  
003°

**IF**  
LIQWD  
6000  
(RNP 0.30)  
3200  
151°  
(1.1)  
SSUN  
210K  
1900  
1900  
260°  
(3.5)  
EJAYE

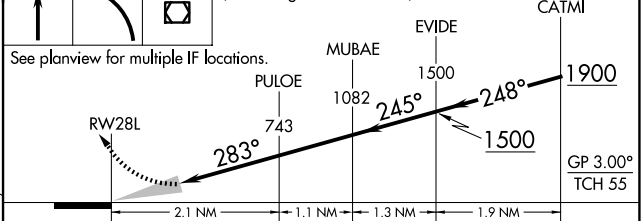
**SEE INSET FOR ROUTING TO EJA**

PULOE (1.1)  
MUBAE (1.3)  
(FAF) EVIDE  
CATMI  
1500  
248° (1.9)  
283° (2.1)  
245°  
RW28L  
Λ 519  
Λ 500  
Λ 516  
335 ± Λ  
Λ 945  
Λ 379  
667 Λ

ROUTING TO EJAYE (not to scale)

(IF) SHAFR	
6700	210K
(RNP 0.30)	

2100	4000	UBG	VGSI and RNAV glidepath not coincident (VGSI Angle 3.00/TCH 72).
------	------	-----	--



CATEGORY	A	B	C	D
RNP 0.23 DA		370/33	347 (400-5%)	
RNP 0.30 DA		476/53	453 (500-1)	

**AUTHORIZATION REQUIRED**

PORTLAND INTL (PDX)

45°35'N-122°36'W

RNAV (RNP) Y RWY 28L

NW-1, 07 AUG 2025 to 04 SEP 2025

NW-1 07 AUG 2025 to 04 SEP 2025