

LOC/DME I-PDX	APP CRS		10R	10L
		Rwy Idg	11000	8535
		TDZE	24	30
		Apt Elev	31	31
		Chan 42		

ILS or LOC RWY 10R  
PORTLAND INTL (PDX)

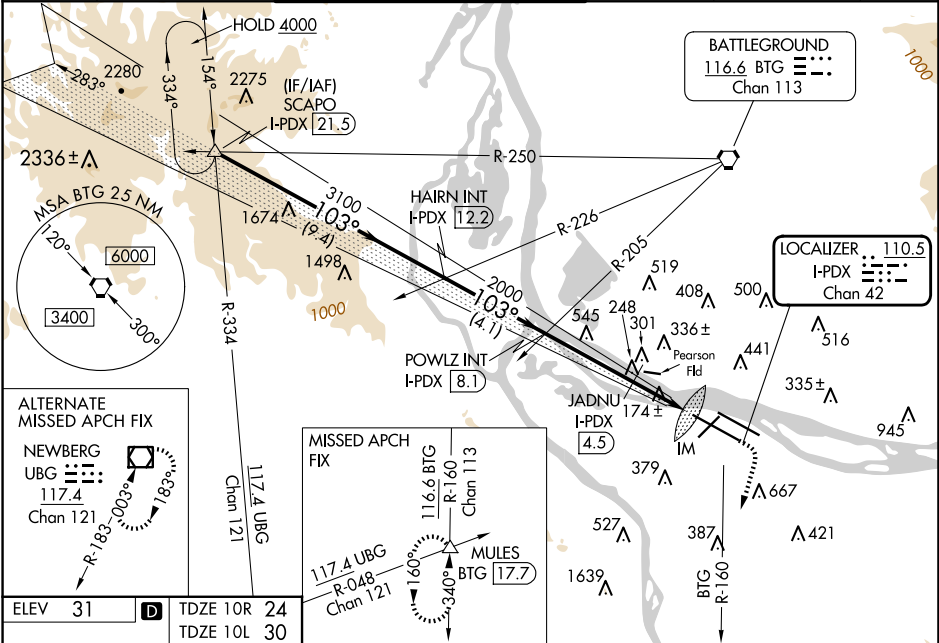
**⚠** Simultaneous approach authorized. Inop table does not apply to Sidestep LOC 10L. For inop ALS increase S-ILS 10R Cat E visibility to RVR 4000. For inop ALS increase S-LOC 10R Cat C/D/E visibility to 2½ SM. For inop ALS increase JADNU fix minimums S-LOC 10R Cat C/D/E visibility to RVR 6000. Sidestep NA until passing JADNU.

ALSIF-2 Rwy 10R

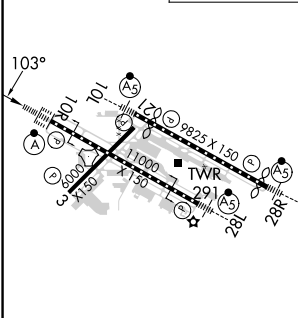
MALSR Rwy 10L

**MISSED APPROACH:** Climb to 1100 then climbing right turn to 5000 on BTG VORTAC R-160 to MULES/ BTG 17.7 DME and hold, continue climb-in-hold to 5000.

D-ATIS 128.35 269.9	PORTLAND APP CON 124.35 299.2	PORTLAND TOWER Rwy 10L-28R 118.7 257.8 Rwys 3-21, 10R-28L 123.775 251.125		GND CON 121.9 348.6	CNLC DEL 120.125 318.1	CPDLC
---------------------------	----------------------------------	---	--	------------------------	---------------------------	-------



ELEV 31	<b>D</b>	TDZE 10R 24	TDZE 10L 30
---------	----------	-------------	-------------



REIL Rwys 3 and 21 TDZ/CL Rwy 10R MIRL Rwy 3-21 HIRL Rwys 10L-28R and 10R-28L					
FAF to MAP 6 NM					
Knots	60	90	120	150	180
Min:Sec	6:00	4:00	3:00	2:24	2:00

SCAPO I-PDX [21.5]		VGSJ and ILS glidepath not coincident (VGSJ Height 3.00/TCH 71).		1100 5000 BTG R-160		MULES △	
4000		HAIRN INT I-PDX [12.2]	POWLZ INT I-PDX [8.1]	JADNU I-PDX [4.5]	*LOC only		
103°		3100	2000	*I-PDX [3.1]	IM		
GS 3.00° TCH 53		2000	*860	1 NM	0.1		
9.4 NM		4.1 NM		3.6 NM	1.4		
CATEGORY	A		B		C	D	E
S-ILS 10R	224/18 200 (200-½)						
S-LOC 10R	860/24 836 (900-½)		860/40 836 (900-¾)		860-17½ 836 (900-17½)		
C CIRCLING	860-1¼ 829 (900-1¼)		1060-3 1029 (1100-3)		1140-3 1109 (1200-3)		
JADNU FIX MINIMUMS							
S-LOC 10R	440/24 416 (500-½)		440/40 416 (500-¾)				
SIDESTEP 10L	800-1 770 (800-1)		800-1¼ 770 (800-1¼)		800-2½ 770 (800-2½)		800-2¾ 770 (800-2¾)

NW-1, 07 AUG 2025 to 04 SEP 2025

NW-1, 07 AUG 2025 to 04 SEP 2025