

HI-TACAN RWY 10R

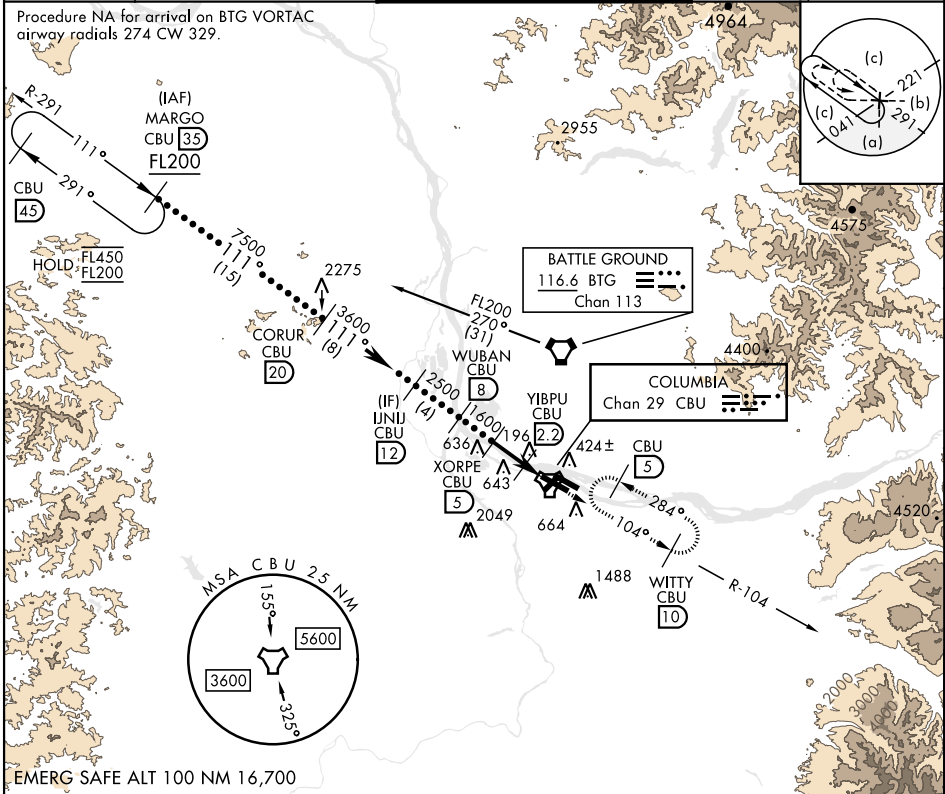
TACAN CBU Chan 29	APCH CRS 111°	Rwy ldg 11,000 TDZE 24 Arpt Elev 31
-------------------	---------------	-------------------------------------

[USAF]

PORTLAND INTL (KPDX)

<p>✦ * When ALS inop, increase CAT E vis to 1 1/4 miles.</p>	<p>ALSF-2</p>	<p>MISSED APPROACH: Climb to 4000 on CBU TACAN R-104 to WITTY/CBU 10 DME and hold, continue climb-in-hold to 4000.</p>
--	---------------	--

ATIS 128.35 269.9	APP CON 118.1 284.6 (100°-279°) 124.35 299.2 (280°-099°)	TOWER 118.7 257.8 Rwy 10L-28R 123.775 251.125 Rwy 3-21, 10R-28L	GND CON 121.9 348.6	CLNC DEL 120.125 318.1
-------------------	--	---	---------------------	------------------------



MARGO 35				CORUR 20				UNJI 12				WUBAN 8				XORPE 5				YIBPU 2.2				TACAN				4000 CBU R-104		WITTY CBU 10		ELEV 31		TDZE 24	
FL200 111°				7500				3600				2500				1600				640				0.6								Rwy 10L Idg 8535'		Rwy 28R Idg 9290'	
3.21° TCH 71																																			
CATEGORY C				D				E																											
S-10R * 460/40				436				(500-34)																											
CIRCLING 1020-3				989				(1000-3)				1140-3				1109 (1200-3)																			

HI-TACAN RWY 10R