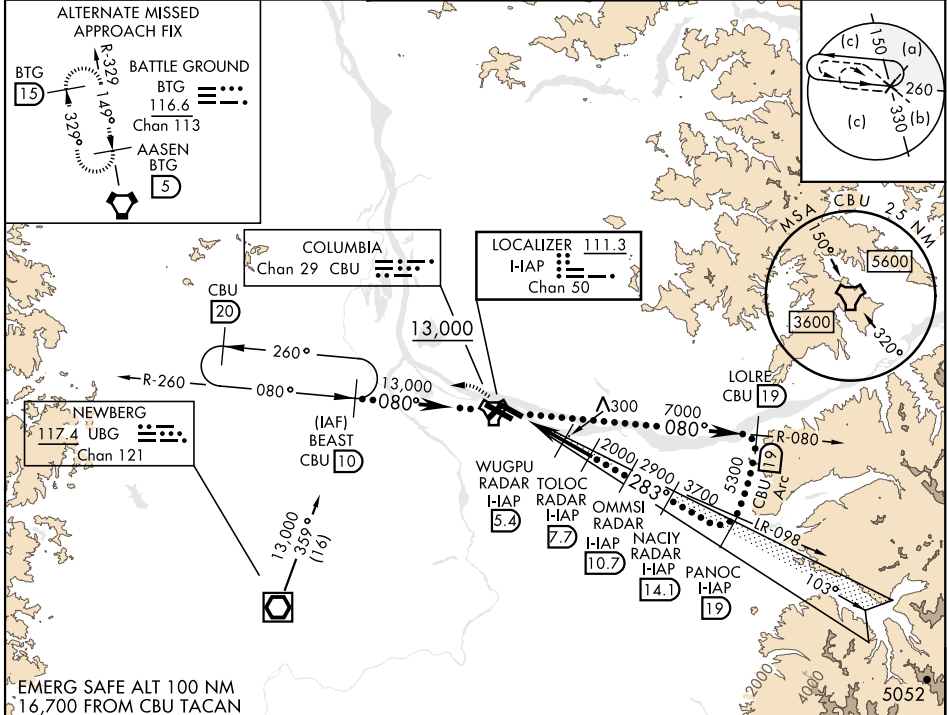


HI-ILS or LOC RWY 28R

LOC/DME I-AP 111.3 Chan 50	APCH CRS 283°	Rwy Idg TDZE 31 Arpt Elev 31	[USAF]	PORTLAND INTL (KPDJ)
RADAR or DME required.			MALSR	MISSED APPROACH: Climb to 600 then climbing left turn to 4000 on CBU TACAN R-260 to BEAST/ CBU 10 DME and hold, continue climb in holding to 4000.
*When ALS inop, increase CAT E RVR to 40. **When ALS inop, increase CAT E vis to 1½.			A5	
ATIS 128.35 269.9	APP CON 118.1 284.6 (100°-279°) 124.35 299.2 (280°-099°)	TOWER Rwy 10L-28R 118.7 257.8 Rwy 3-21, 10R-28L 123.775 251.125	GND CON 121.9 348.6	CLNC DEL 120.125 318.1



600 ↑ CBU R-260	BEAST CBU 10	VGSI and ILS glidepath not coincident (VGSI Angle 3.00/TCH 70).	Use I-AP DME when on LOC course.	ELEV 31	TDZE 31
Rwy 10L Idg 8535' Rwy 28R Idg 9290'				Rwy 10L Idg 8535' Rwy 28R Idg 9290'	
WUGPU RADAR I-AP 5.4 TOLOC RADAR I-AP 7.7 OMMSI RADAR I-AP 10.7 NACIY RADAR I-AP 14.1 PANOC I-AP 19				REIL Rwy 3 and 21 TDZL/CL Rwy 10R MIRL Rwy 3-21 HIRL Rwy 10L-28R and 10R-28L	
GS 3.00° TCH 54				FAF to MAP 6 NM	
CATEGORY				Knots	120 140 160 180 200
S-ILS 28R *				Min:Sec	3:00 2:34 2:15 2:00 1:48
S-LOC 28R **					
CIRCLING					

HI-ILS or LOC RWY 28R