

## HI-ILS or LOC RWY 10R

LOC/DME I-PDX <b><u>110.5</u></b> Chan <b>42</b>	APCH CRS <b>103°</b>	Rwy Idg <b>11,000</b> TDZE <b>24</b> Arpt Elev <b>31</b>
--	-------------------------	--

AL-330 [USAF]

PORTLAND INTL (KPDX)

DME required.

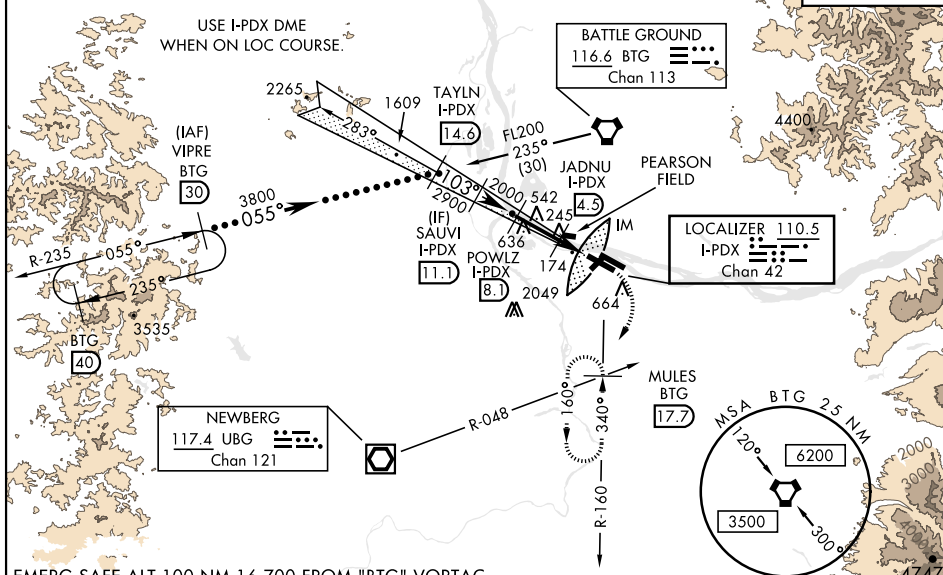
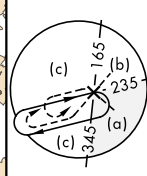
**T** \* When AIS inop, increase RVR to 40 and vis to 3/4 mile



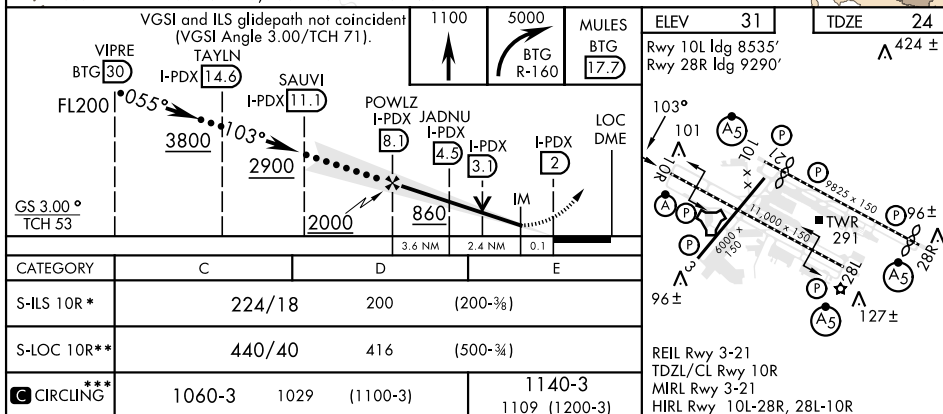
**MISSED APPROACH:** Climb to 1100 then climbing right turn to 5000 on BTG VORTAC R-160 to MULES/BTG 17.7 DME and hold, continue climb-in-hold to 5000.

ATIS		APP CON	TOWER		GND CON	CLNC DEL
128.35	269.9	118.1 284.6 (100°-279°)	118.7	257.8 Rwy 10L-28R	121.9 348.6	120.125 318.1
		124.35 299.2 (280°-099°)	123.775	251.125 Rwy 3-21, 10R-28L		

\*\*\* When VGS1 rwy 28R inop, circling rwy 28R NA at night.  
Simultaneous approach authorized.



EMERG SAFE ALT 100 NM 16.700 FROM "BTG" VORTAC



PORTLAND, OREGON

45°35'N-122°36'W

PORTLAND INTL (KPDX)

Amdt 7C 03NOV22

## HI-ILS or LOC RWY 10R