

LOC/DME I-GCS	APP CRS	Rwy Idg	7200
<b>109.9</b>	<b>290°</b>	TDZE	<b>56</b>
Chan <b>36</b>		Apt Elev	<b>76</b>

ILS or LOC RWY 29

PORTLAND INTL JETPORT (PWM)

**V**

**A**

**\*\* RVR 1800 authorized with use of FD or AP or HUD to DA.**

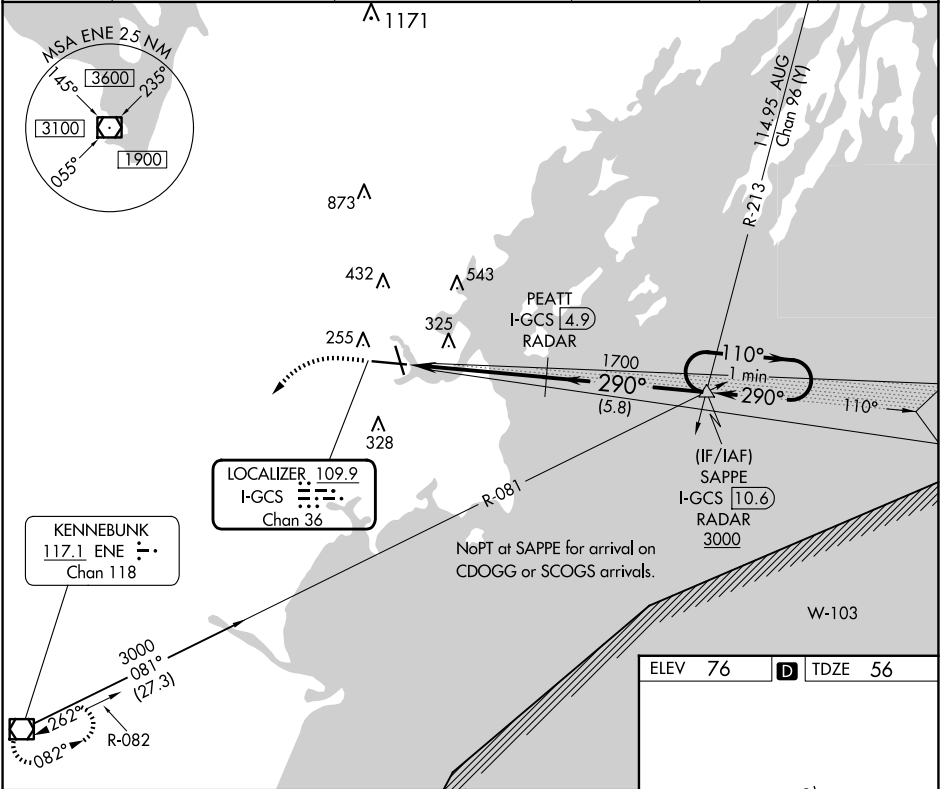
**DME or RADAR required.**

**MALSR**

**A5**

**MISSED APPROACH:** Climb to 700 then climbing left turn to 3000 direct ENE VOR/DME and hold.

ATIS	PORTLAND APP CON *	PORTLAND TOWER *	GND CON	CLNC DEL	UNICOM
<b>119.05</b>	<b>119.75 269.35</b>	<b>120.9 0 (CTAF) 257.8</b>	<b>121.9</b>	<b>121.9</b>	<b>122.95</b>



	700	3000	ENE						
* LOC only	I-GCS	DME	ANTENNA	I-GCS	1700	SAPPE	I-GCS	110°	3000
	0.2	0.2		1.4		10.6		290°	
									GS 3.00° TCH 50
CATEGORY	A	B	C	D					
S-ILS 29**		256/24	200 (200-½)						
S-LOC 29	580/24	524 (600-½)	580/55	524 (600-1)					
CIRCLING	620-1 544 (600-1)	640-1 564 (600-1)	740-1¾ 664 (700-1¾)	860-2½ 784 (800-2½)					

ELEV 76 TDZE 56

**D**

TWR 162

81

110

0.5% UP

7200 X 150

36

290°

TDZ/CL Rwy 11

MIRL Rwy 18-36

HIRL Rwy 11-29

REIL Rws 18 and 36

FAF to MAP 5.1 NM

Knots	60	90	120	150	180
Min:Sec	5:06	3:24	2:33	2:02	1:42

NE-1, 07 AUG 2025 to 04 SEP 2025

NE-1, 07 AUG 2025 to 04 SEP 2025