

LOC/DME I-PWM 109.9 Chan 36	APP CRS 110°	Rwy Idg 7200 TDZE 76 Apt Elev 76
---	------------------------	---

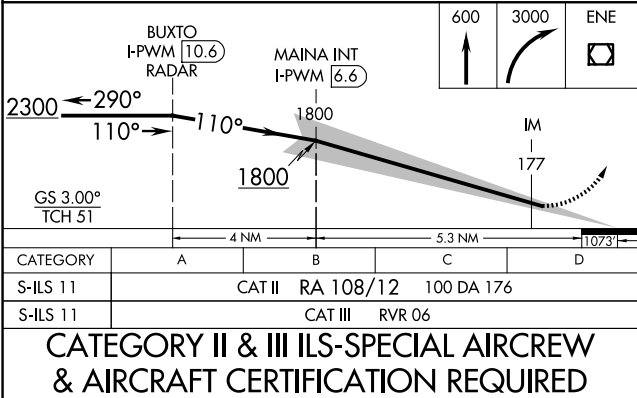
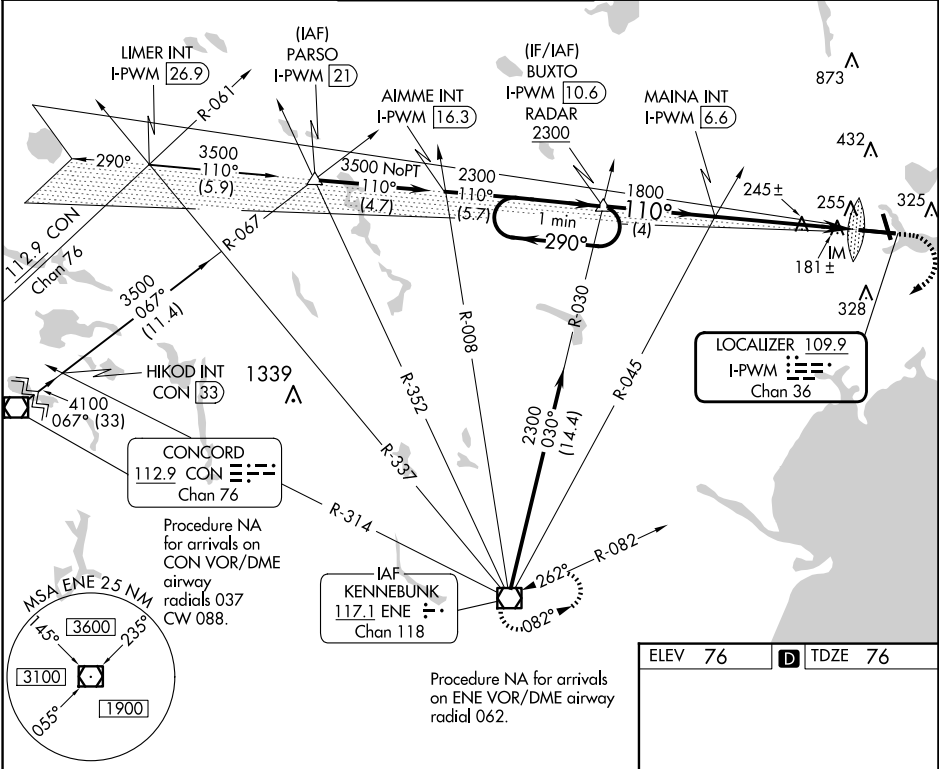
ILS RWY 11 (CAT II & III)
PORTLAND INTL JETPORT (PWM)

Procedure NA when control tower closed.

ALSF-2

MISSED APPROACH: Climb to 600 then climbing right turn to 3000 direct ENE VOR/DME and hold.

ATIS 119.05	PORTLAND APP CON ★ 119.75 269.35	PORTLAND TOWER ★ 120.9 0 (CTAF) 257.8	GND CON 121.9	CLNC DEL 121.9	UNICOM 122.95
-----------------------	--	---	-------------------------	--------------------------	-------------------------



ELEV 76 TDZE 76

TDZ/CL Rwy 11 0
MRL Rwy 18-36 0
HIRL Rwy 11-29 0
REIL Rwy 18 and 36 0

NE-1, 07 AUG 2025 to 04 SEP 2025

NE-1, 07 AUG 2025 to 04 SEP 2025