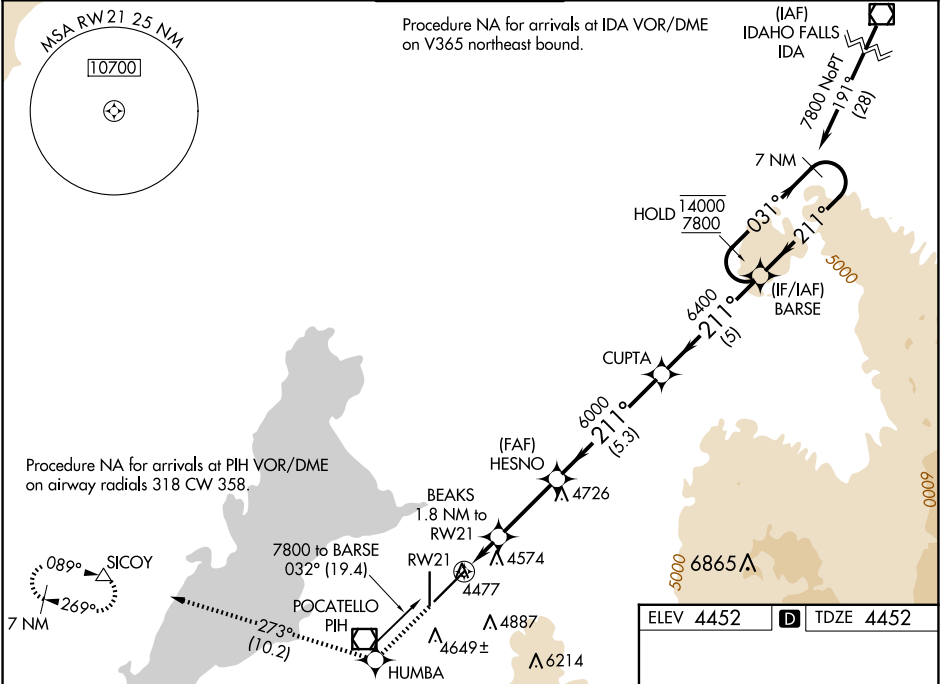


WAAS CH <b>78212</b> <b>W21A</b>	APP CRS <b>211°</b>	Rwy Idg TDZE Apt Elev <b>9059</b> <b>4452</b> <b>4452</b>
--	------------------------	--

RNAV (GPS) RWY 21  
POCATELLO RGNL (PIH)

RNP APCH - GPS.	MALSR	MISSED APPROACH: Climb to 7000 direct HUMBA and track 273° to SICOY and hold.
<div><div></div><div></div></div> <div>Circling NA southeast of Rwy 3-21. For uncompensated Baro-VNAV systems, LNAV/VNAV NA below -22°C or above 54°C. For inop ALS, increase LNAV Cat C/D visibility to RVR 5500. *RVR 1800 authorized with use of FD or AP or HUD to DA.</div>	<div><div></div><div>AS</div></div>	

ATIS <b>135.625</b>	SALT LAKE CENTER <b>128.35 239.25</b>	POCATELLO TOWER* <b>119.1</b> (CTAF) <div><div></div><div><b>257.8</b></div></div>	GND CON <b>121.9</b>	UNICOM <b>122.95</b>
------------------------	--	---	-------------------------	-------------------------



7000	HUMBA	tr 273°	SICOY	VGSI and RNAV glidepath not coincident (VGSI Angle 3.00/TCH 52).
<div></div>	<div></div>	<div></div>	<div></div>	
BEAKS 1.8 NM to RW21	HESNO	CUPTA	BARSE	7 NM Holding Pattern
1 NM to RW21	6000	6400	031° 211°	14000 7800
5060	6000			GP 3.00° TCH 56
1 NM	0.8 NM	3 NM	5.3 NM	5 NM
CATEGORY	A	B	C	D
LPV DA*		4652/24	200 (200-½)	
LNAV/VNAV DA		4835/35	383 (400-¾)	
LNAV MDA	4820/24	368 (400-½)	4820/35	368 (400-¾)
CIRCLING	4860-1 408 (500-1)	4920-1 468 (500-1)	4920-1½ 468 (500-1½)	5020-2 568 (600-2)

