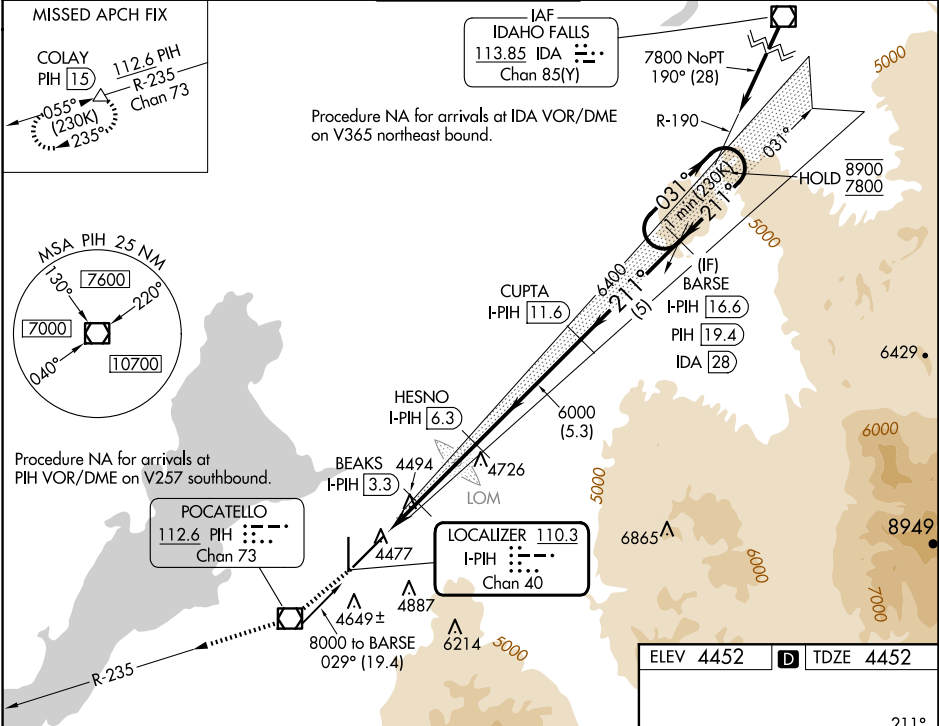




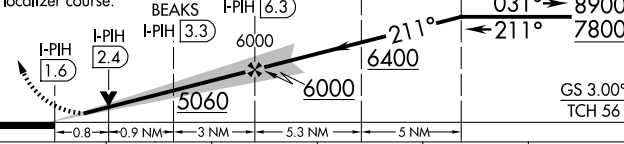

LOC/DME I-PIH 110.3 Chan 40	APP CRS 211°	Rwy Idg TDZE Apt Elev	9059 4452 4452
---	------------------------	-----------------------------	---

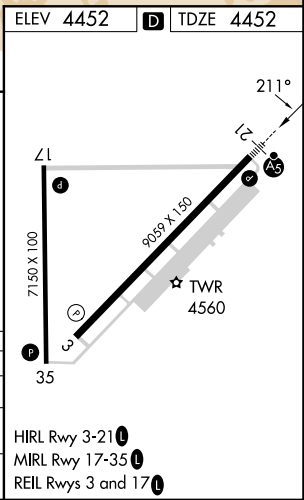
ILS or LOC RWY 21
POCATELLO RGNL (PIH)

DME required.	MALSR	MISSED APPROACH: Climb to 7000 direct PIH VOR/DME and on PIH R-235 to COLAY/PIH 15 DME and hold, do not exceed 230K in holding pattern.
⚠ Circling NA southeast of Rwy 3-21. For inop ALS, increase S-ILS-21 Cat E visibility to RVR 4000, S-LOC-21 Cat C/D/E to RVR 4500. *RVR 1800 authorized with use of FD or AP or HUD to DA.		

ATIS 135.625	SALT LAKE CENTER 128.35 239.25	POCATELLO TOWER ★ 119.1 (CTAF) 257.8	GND CON 121.9	UNICOM 122.95
------------------------	--	---	-------------------------	-------------------------



7000 ↑	PIH 	PIH R-235	COLAY 	VGSI and ILS glidepath not coincident (VGSI Angle 3.00/TCH 52).				
Use I-PIH DME when on the localizer course.				One Minute Holding Pattern				
								
CATEGORY	A		B		C	D	E	
S-ILS 21*	4652/24 200 (200-½)							
S-LOC 21	4760/24 308 (400-½)							
 CIRCLING	4860-1 408 (500-1)	4920-1 468 (500-1)	4920-1½ 468 (500-1½)	5020-2 568 (600-2)	5060-2¼ 608 (700-2¼)			



NW-1, 07 AUG 2025 to 04 SEP 2025

NW-1, 07 AUG 2025 to 04 SEP 2025