

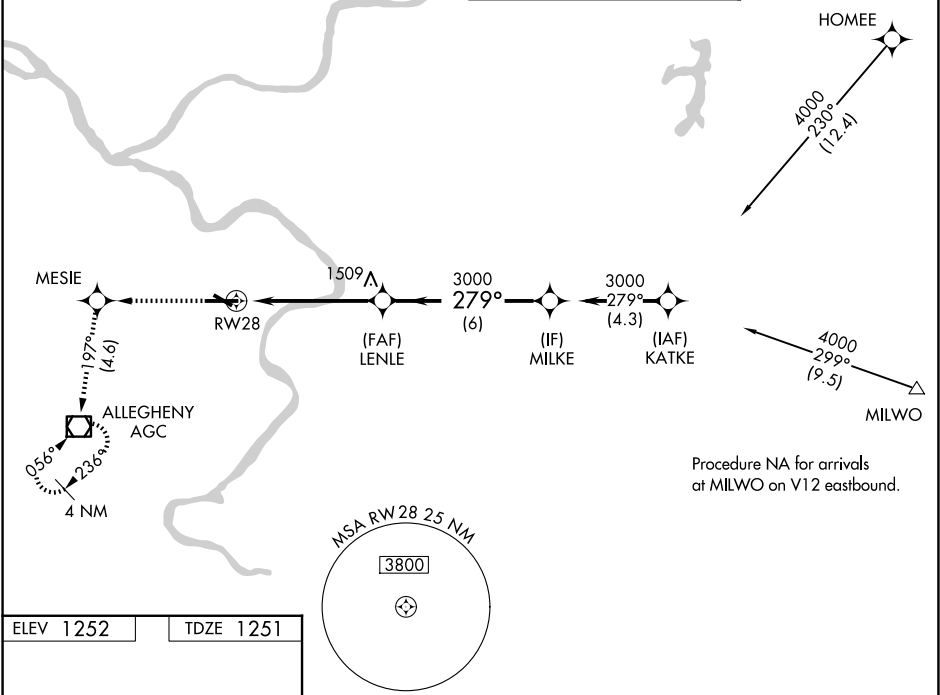
WAAS CH 65625 W28A	APP CRS 279°	Rwy Ldg TDZE 1251 Apt Elev 1252
--	------------------------	---

RNAV (GPS) RWY 28

ALLEGHENY COUNTY (AGC)

RNP APCH - GPS.	MALS	MISSED APPROACH: Climb to 3000 direct MESIE and on 197° track to AGC VOR/DME and hold, continue climb-in-hold to 3000.
For uncompensated Baro-VNAV systems, LNAV/VNAV NA below -16°C or above 54°C. Autopilot coupled approach NA below 1900. Inop table does not apply to LPV, for inop ALS increase LNAV/VNAV all Cats to RVR 4500. Circling Rwy 13 NA at night.		

ATIS 120.55	PITTSBURGH APP CON 119.35 285.575	ALLEGHENY TOWER 121.1 239.0	GND CON 121.7
-----------------------	---	---------------------------------------	-------------------------



3000

MESIE

tr 197°

AGC

LENLE

3000

MILKE

3000

GP 3.05°

TCH 51

1 NM

4.2 NM

6 NM

1 NM

4.2 NM

6 NM

CATEGORY	A	B	C	D
LPV DA	1501/40 250 (300-¾)			
LNAV/VNAV DA	1546/40 295 (300-¾)			
LNAV MDA	1640/40 389 (400-¾)		1640/55 389 (400-1)	
CIRCLING	1720-1 468 (500-1)		1980-2 728 (800-2) 1980-2¼ 728 (800-2¼)	

REIL Rwy 10, 13, and 31

HIRL Rwy 10-28 and 13-31