

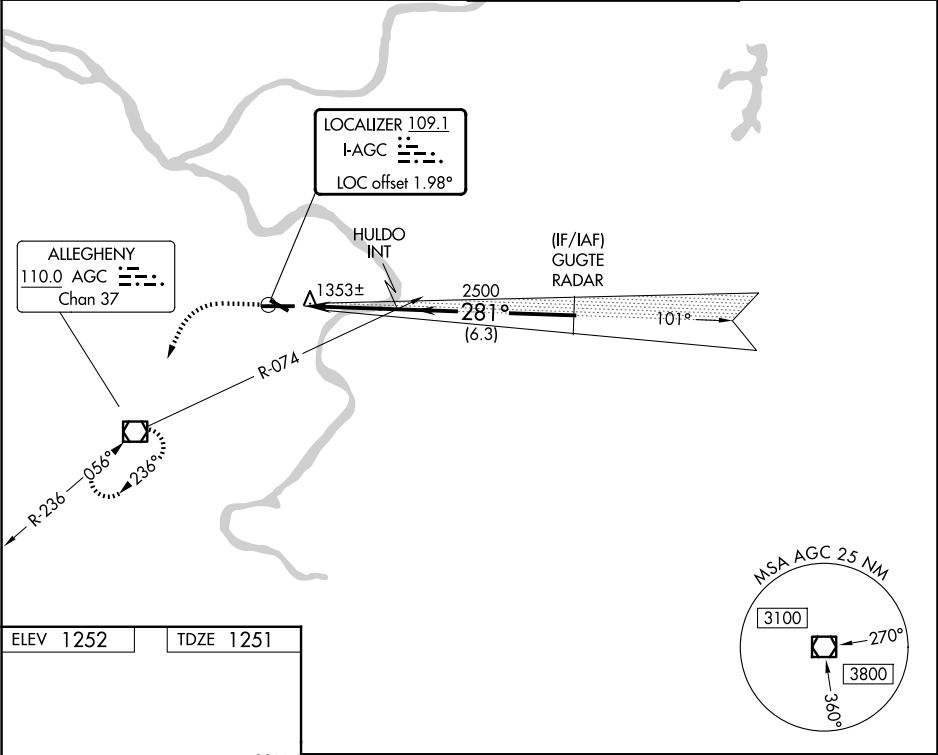
LOC I-AGC 109.1	APP CRS 281°	Rwy Ldg TDZE 1251 Apt Elev 1252
---------------------------	------------------------	---

ILS or LOC RWY 28

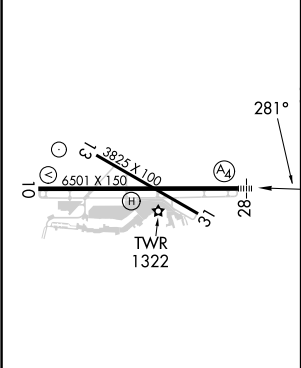
ALLEGHENY COUNTY (AGC)

RADAR required.		MALS	MISSED APPROACH: Climb to 2000 then climbing left turn to 3000 direct AGC VOR/DME and hold, continue climb-in-hold to 3000.
Autopilot coupled approach NA below 1900. Circling Rwy 13 NA at night. For inop ALS, increase S-LOC Cats C and D visibility to RVR 6000. Inop table does not apply to S-ILS 28.		<div><div>A4</div><div><div></div><div></div><div></div></div></div>	

ATIS 120.55	PITTSBURGH APP CON 119.35 285.575	ALLEGHENY TOWER 121.1 239.0	GND CON 121.7
-----------------------	---	---------------------------------------	-------------------------



ELEV 1252	TDZE 1251
------------------	------------------



REIL Rwys 10, 13, and 31 HIRL Rwys 10-28 and 13-31					
FAF to MAP 3.8 NM					
Knots	60	90	120	150	180
Min:Sec	3:48	2:32	1:54	1:31	1:16

281°		2000	3000	AGC
<div><div></div><div></div><div></div></div>		<div><div></div><div></div><div></div></div>	<div><div></div><div></div><div></div></div>	<div><div></div><div></div><div></div></div>
HULDO INT		2500	281°	3000
GUGTE RADAR		2500	281°	3000
GS 3.00°		TCH 51		
3.8 NM		6.3 NM		
CATEGORY	A	B	C	D
S-ILS 28	1501/40		250 (300-¾)	
S-LOC 28	1660/40	409 (500-¾)	1660/50	409 (500-1)
CIRCLING	1720-1	468 (500-1)	1980-2 728 (800-2)	1980-2¼ 728 (800-2¼)

NE-4, 07 AUG 2025 to 04 SEP 2025

NE-4, 07 AUG 2025 to 04 SEP 2025