

ALLEGHENY NINE DEPARTURE

ATIS
120.55
GND CON
121.7
ALLEGHENY TOWER
121.1 239.0
PITTSBURGH DEP CON
119.35 285.575

BRIGGS
114.05 BSV :--:--:
Chan 87 (Y)

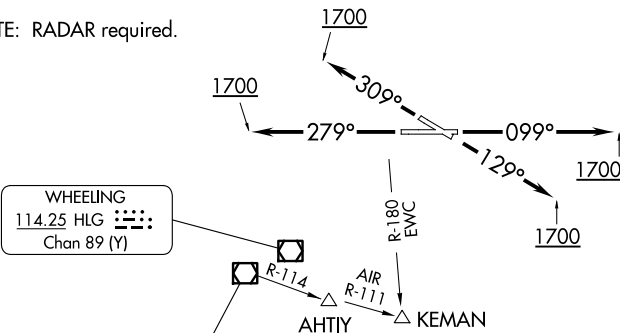
AKRON
114.4 ACO :--:--:
Chan 91

FRANKLIN
109.6 FKL :--:--:
Chan 91

ELLWOOD CITY
115.8 EWC :--:--:
Chan 105

TYROO

NOTE: RADAR required.



TAKEOFF MINIMUMS
Rwys 10, 28, 31: Standard.
Rwy 13: Standard with minimum
climb of 205' per NM to 1800.

DEPARTURE ROUTE DESCRIPTION
TAKEOFF RUNWAY 10: Climb heading 099° until 1700 thence....
TAKEOFF RUNWAY 13: Climb heading 129° until 1700 thence....
TAKEOFF RUNWAY 28: Climb heading 279° until 1700 thence....
TAKEOFF RUNWAY 31: Climb heading 309° until 1700 thence....
....expect vectors to assigned route/fix. Maintain 3000. Expect further
clearance to requested altitude 10 minutes after departure.

NOTE: Chart not to scale.

ALLEGHENY NINE DEPARTURE

NE-4, 07 AUG 2025 to 04 SEP 2025

NE-4, 07 AUG 2025 to 04 SEP 2025