

| | | | |
|-------------|---------|----------|------|
| VOR/DME GLL | APP CRS | Rwy Idg | N/A |
| 114.2 | 209° | TDZE | N/A |
| Chan 89 | | Apt Elev | 4697 |

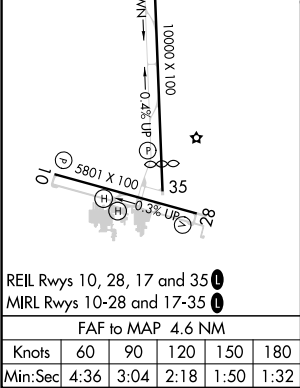
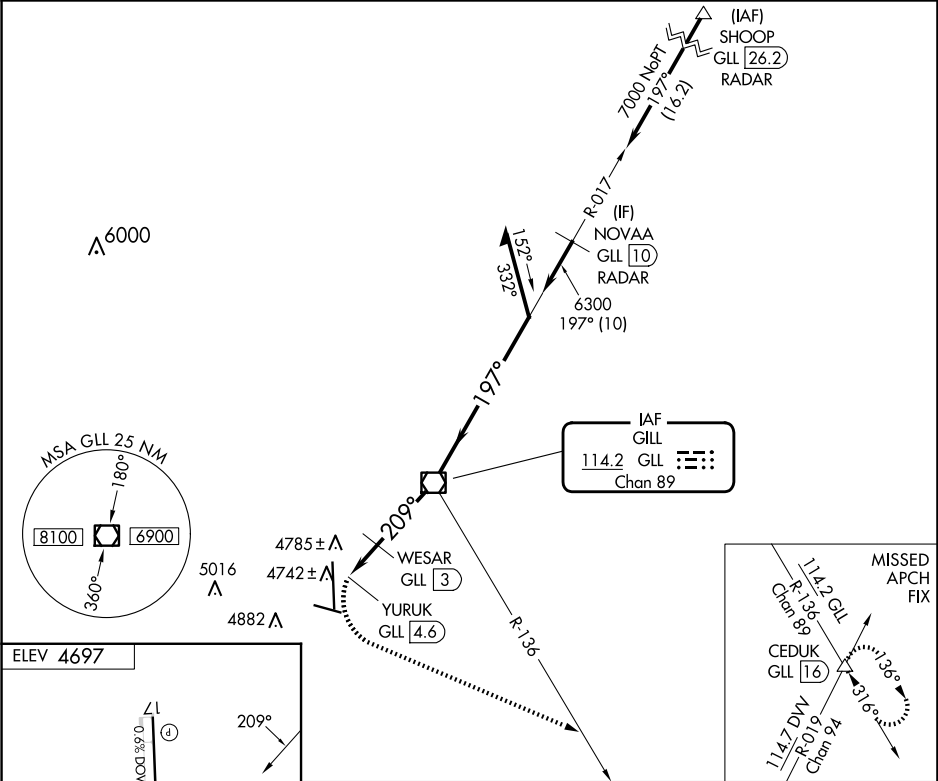
VOR-A

GREELEY-WELD COUNTY (GXY)

⚠ When local altimeter setting not received, use Northern Colorado Rgnl altimeter setting and increase all MDA 100 feet and visibility Cat C/D and WESAR fix minimums Cat C/D visibility ¼ SM. DME required.

MISSED APPROACH: Climbing left turn to 7000 on heading 100° and GLL VOR/DME R-136 to CEDUK INT/GLL 16 DME and hold.

| | | | |
|----------|----------------|----------|-----------------------|
| AWOS-3PT | DENVER APP CON | CLNC DEL | UNICOM |
| 135.175 | 134.85 251.125 | 126.65 | 122.7 (CTAF) 📻 |



| | | | | |
|-----------------------------------|-----------------------|-----------------------|-------------------------|--|
| 7000 | GLL R-136 | CEDUK | GLL VOR/DME | Remain within 10 NM |
| hdg 100° | | | | |
| WESAR GLL 3 | YURUK GLL 4.6 | 6300 | 5300* | *5400 when using Northern Colorado Rgnl altimeter setting. |
| 1.6 NM | 3 NM | | | |
| CATEGORY | A | B | C | D |
| C CIRCLING | 5300-1 | 603 (700-1) | 5300-1¾ 603 (700-1¾) | 5380-2¼ 683 (700-2¼) |
| WESAR FIX MINIMUMS (DME REQUIRED) | | | | |
| C CIRCLING | 5120-1 423 (500-1) | 5200-1 503 (600-1) | 5200-1½ 503 (600-1½) | 5380-2¼ 683 (700-2¼) |