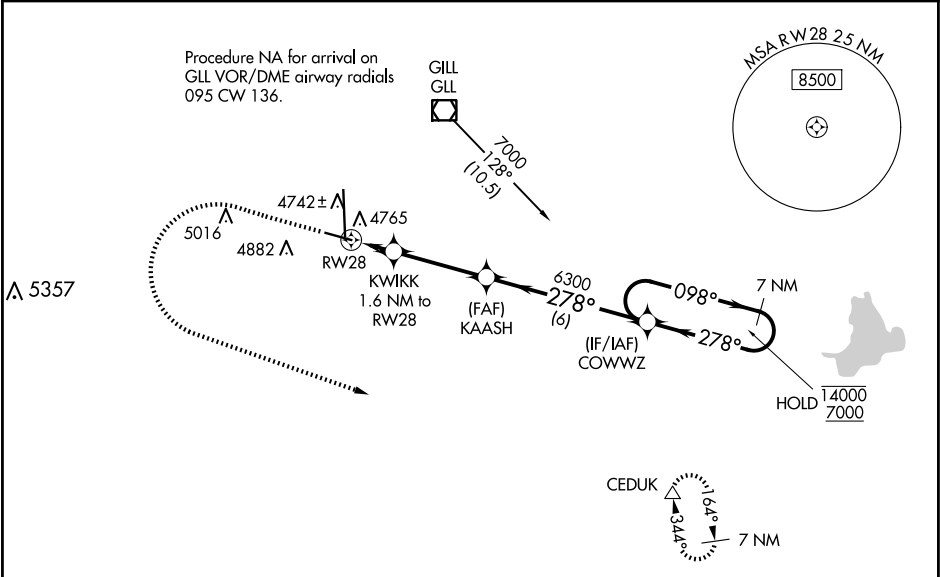


WAAS CH 86808 W28A	APP CRS 278°	Rwy Idg TDZE Apt Elev	5801 4650 4697
--	------------------------	-----------------------------	---

RNAV (GPS) RWY 28

GREELEY-WELD COUNTY (GXY)

RNP APCH.		MISSED APPROACH: Climb to 6300 then climbing left turn to 7000 direct CEDUK and hold.	
⚠ Baro-VNAV NA when using Fort Collins/Loveland altimeter setting. For uncompensated Baro-VNAV systems, LNAV/VNAV NA below -24°C or above 54°C. When local altimeter setting not received, use Fort Collins/Loveland altimeter setting: increase LPV DA to 4935 feet and visibility ¼ SM, LNAV/VNAV DA to 5061 feet and visibility ¼ SM; increase all MDAs 100 feet and visibility Cats C and D ¼ SM.			
AWOS-3PT 135.175	DENVER APP CON 134.85 251.125	CLNC DEL 126.65	UNICOM 122.7 (CTAF) 0



ELEV 4697

TDZE 4650

6300

7000

CEDUK

VGSI and RNAV glidepath not coincident (VGSI angle 3.00/TCH 27).

7 NM Holding Pattern

*LNAV only

*KWKIK 1.6 NM to RW28

KAASH 6300

COWWZ

RW28

5200

6300

098°

278°

14000

7000

GP 3.00° TCH 50

1.6 NM

3.5 NM

6 NM

CATEGORY

A

B

C

D

LPV DA

4850-¾ 200 (200-¾)

LNAV/VNAV DA

4976-1 326 (300-1)

LNAV MDA

5080-1 430 (400-1)

5080-1¼ 430 (400-1¼)

CIRCLING

5120-1 423 (500-1)

5200-1 503 (600-1)

5200-1½ 503 (600-1½)

5380-2¼ 683 (700-2¼)

REIL Rwy 10, 17, 28 and 35

MIRL Rwy 10-28 and 17-35