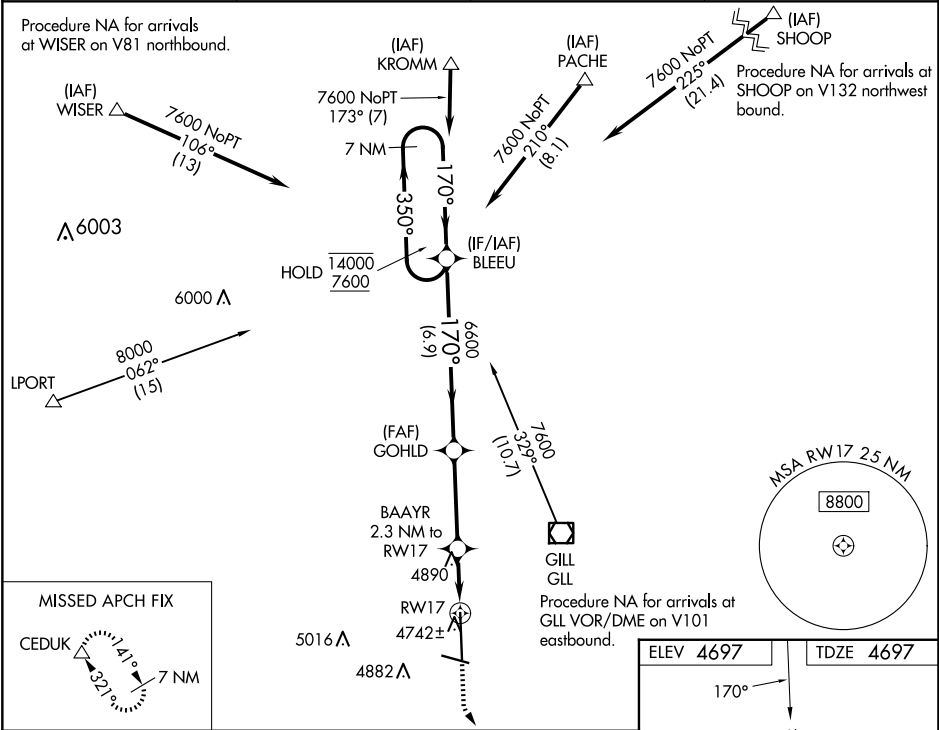


WAAS CH 72708 W17A	APP CRS 170°	Rwy Idg TDZE Apt Elev	10000 4697 4697
--	------------------------	-----------------------------	--

RNAV (GPS) RWY 17
GREELEY-WELD COUNTY (GXY)

RNP APCH. ▼ ▲ For uncompensated Baro-VNAV systems, LNAV/VNAV NA below -24°C or above 54°C.	MISSED APPROACH: Climb to 5400 then climbing left turn to 7000 direct CEDUK and hold.
--	---

AWOS-3PT 135.175	DENVER APP CON 134.85 251.125	CLNC DEL 126.65	UNICOM 122.7 (CTAF) 0
----------------------------	---	---------------------------	---------------------------------



7 NM Holding Pattern				
BLEEU				
GOHLD				
BAAAYR 2.3 NM to RW17				
RW17				
CEDUK				
GP 3.00° TCH 46				
6.9 NM 3.5 NM 1.1 NM 1.2 NM				
CATEGORY	A	B	C	D
LPV DA	4897-3/4 200 (200-3/4)			
LNAV/VNAV DA	4969-7/8 272 (300-7/8)			
LNAV MDA	5140-1	443 (500-1)	5140-1 1/2 443 (500-1 1/2)	5140-2 1/4 443 (500-2 1/4)
CIRCLING	5140-1 443 (500-1)	5200-1 503 (600-1)	5200-1 1/2 503 (600-1 1/2)	5380-2 1/4 683 (700-2 1/4)

