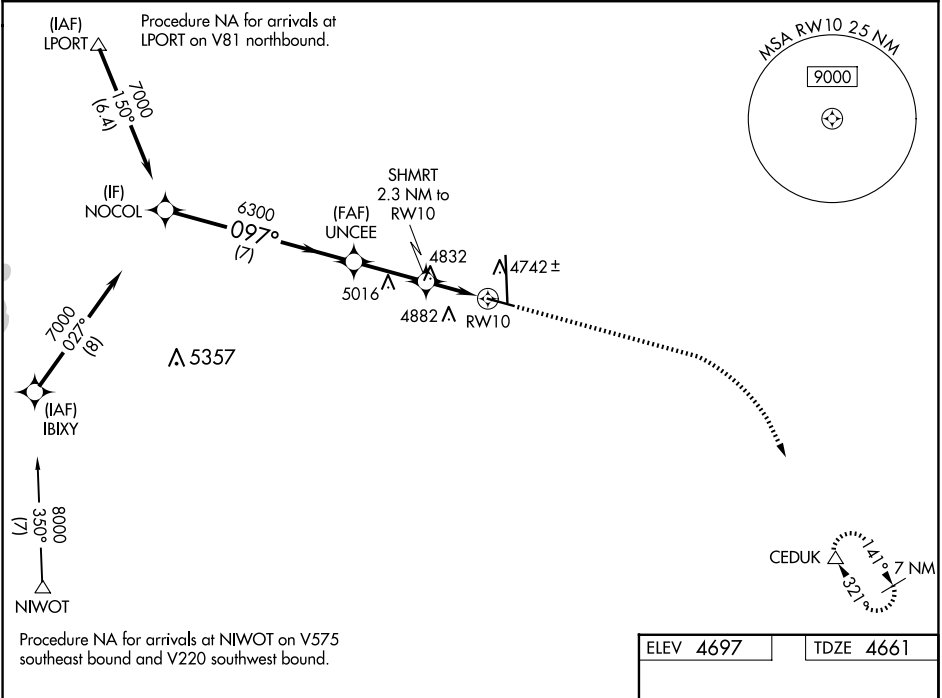


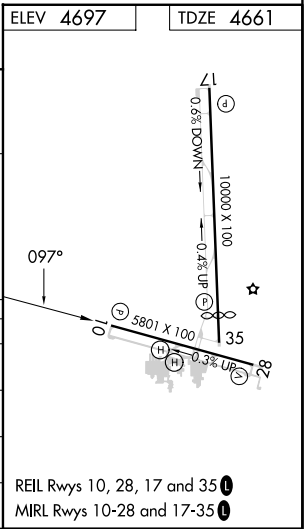
WAAS CH <b>62900</b> <b>W10A</b>	APP CRS <b>097°</b>	Rwy Idg TDZE Apt Elev	<b>5801</b> <b>4661</b> <b>4697</b>
--	------------------------	-----------------------------	---

RNAV (GPS) RWY 10  
GREELEY-WELD COUNTY (GXY)

RNP APCH. For uncompensated Baro-VNAV systems, LNAV/VNAV NA below -24°C or above 54°C.		MISSED APPROACH: Climb to 5400 then climbing right turn to 7000 direct CEDUK and hold.	
AWOS-3PT <b>135.175</b>	DENVER APP CON <b>134.85 251.125</b>	CLNC DEL <b>126.65</b>	UNICOM <b>122.7 (CTAF) 0</b>



VGSI and RNAV glidepath not coincident NOCOL (VGSI Angle 3.00/TCH 43).				5400	7000	CEDUK
7000				*LNAV only		
GP 3.00° TCH 50				UNCEE		
097°				SHMRT 2.3 NM to RWY 10		
6300				*1.4 NM to RWY 10		
*5440				RWY 10		
7 NM				0.9 NM		
2.7 NM				1.4 NM		
CATEGORY	A	B	C	D		
LPV DA	4911-3/4		250 (300-3/4)			
LNAV/VNAV DA	4920-3/4		259 (300-3/4)			
LNAV MDA	5140-1	479 (500-1)	5140-13/8	479 (500-13/8)		
CIRCLING	5140-1 443 (500-1)	5200-1 503 (600-1)	5200-1 1/2 503 (600-1 1/2)	5380-2 1/4 683 (700-2 1/4)		



SW-1, 07 AUG 2025 to 04 SEP 2025

SW-1, 07 AUG 2025 to 04 SEP 2025