

(PIKES3.DEN) 25163  
PIKES THREE DEPARTURE

AL-325 (FAA)

GREELEY-WELD COUNTY (GXY)  
GREELEY, COLORADO

DENVER DEP CON  
134.85 251.125  
CLNC DEL  
126.65

TOP ALTITUDE:  
ASSIGNED BY ATC

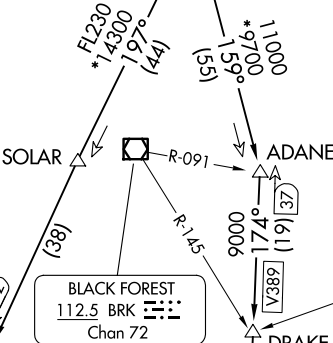
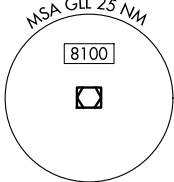
RADAR required.

GILL  
114.2 GLL  
Chan 89

TAKEOFF MINIMUMS

All Rwy's: Standard.

DENVER  
117.9 DEN  
Chan 126



HUGO  
112.1 HGO  
Chan 58

MOCA 14300 for  
ALAMOSA Transition.

ALAMOSA  
113.9 ALS  
Chan 86

PUEBLO  
116.7 PUB  
Chan 114

NOTE: Chart not to scale.

DEPARTURE ROUTE DESCRIPTION

TAKEOFF ALL RUNWAYS: Fly assigned heading and altitude for RADAR vectors to assigned route. Expect filed altitude 10 minutes after departure.

LOST COMMUNICATIONS: If no transmissions are received within one minute after departure, maintain assigned heading until 7000, then climb to filed altitude direct to DEN VOR/DME, then on assigned route. If filed altitude is above 10000, cross DEN VOR/DME at or above 11000.

ALAMOSA TRANSITION (PIKES3.ALS): From over DEN VOR/DME on DEN R-197 to TEHEV, then on ALS R-002 to ALS VORTAC.

BINKE TRANSITION (PIKES3.BINKE): From over DEN VOR/DME on DEN R-197 to TEHEV, then on ALS R-002 to BINKE.

PUEBLO TRANSITION (PIKES3.PUB): From over DEN VOR/DME on DEN R-159 to ADANE, then on PUB R-354 to PUB VORTAC.

PIKES THREE DEPARTURE  
(PIKES3.DEN) 12JUN25

GREELEY, COLORADO  
GREELEY-WELD COUNTY (GXY)

SW-1, 07 AUG 2025 to 04 SEP 2025

SW-1, 07 AUG 2025 to 04 SEP 2025