

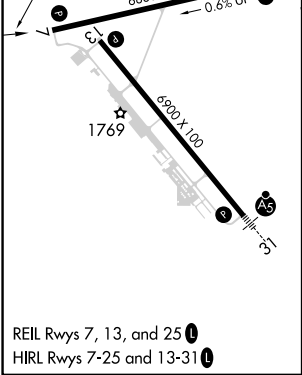
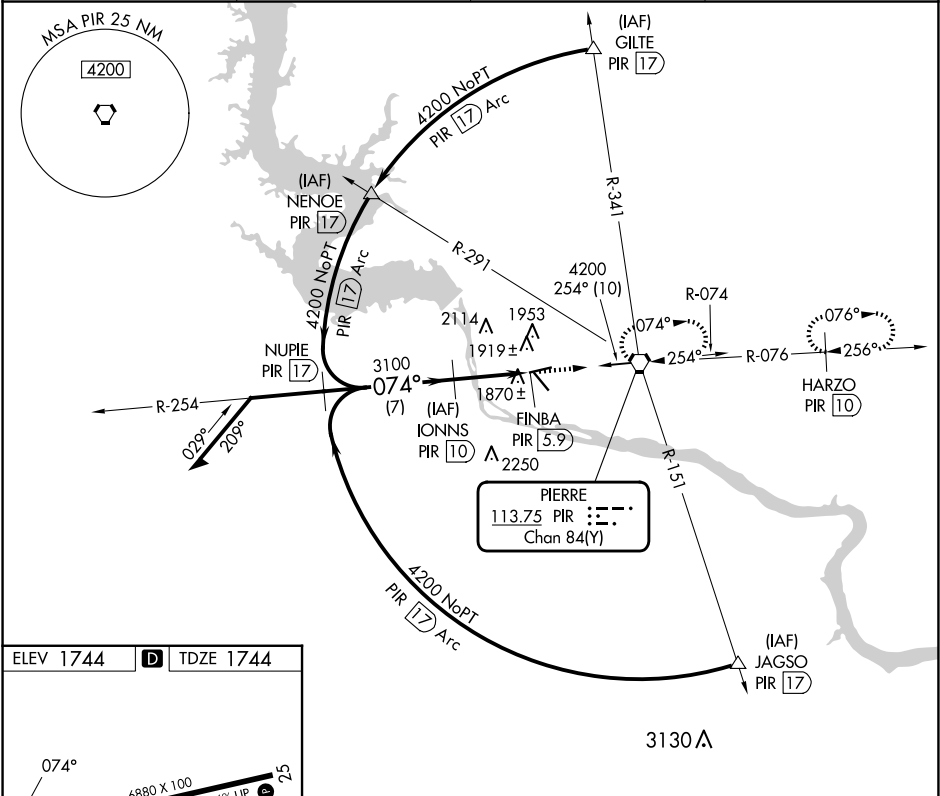
VORTAC PIR	APP CRS	Rwy Idg	6880
113.75	074°	TDZE	1744
Chan 84(Y)		Apt Elev	1744

VOR/DME or TACAN RWY 7
PIERRE RGNL (PIR)

V
A

MISSED APPROACH: Climb to 4000 then right turn direct PIR VORTAC and hold. (TACAN aircraft continue via PIR R-076 to HARZO 10 DME and hold East, right turns, 256° inbound).

ASOS 119.025	MINNEAPOLIS CENTER 125.1 269.1	CTAF 122.7	UNICOM 122.95
-----------------	-----------------------------------	---------------	------------------



VGSI and descent angles not coincident (VGSI Angle 3.00/TCH 51).

Remain within 10 NM

4200

254°

074°

3100

2.98° TCH 56

2.9 NM

1.2

CATEGORY	A	B	C	D
S-7	2180-1	436 (500-1)	2180-1¼ 436 (500-1¼)	2180-1½ 436 (500-1½)
C CIRCLING	2240-1 496 (500-1)	2300-1 556 (600-1)	2400-1¾ 656 (700-1¾)	2460-2¼ 716 (800-2¼)

NC-1, 07 AUG 2025 to 04 SEP 2025

NC-1, 07 AUG 2025 to 04 SEP 2025