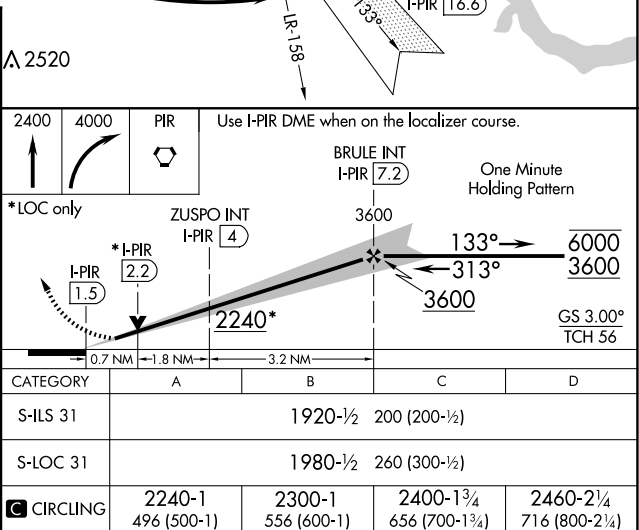
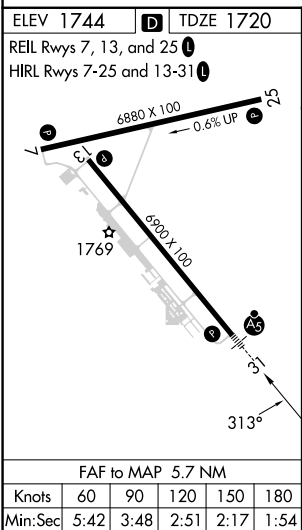
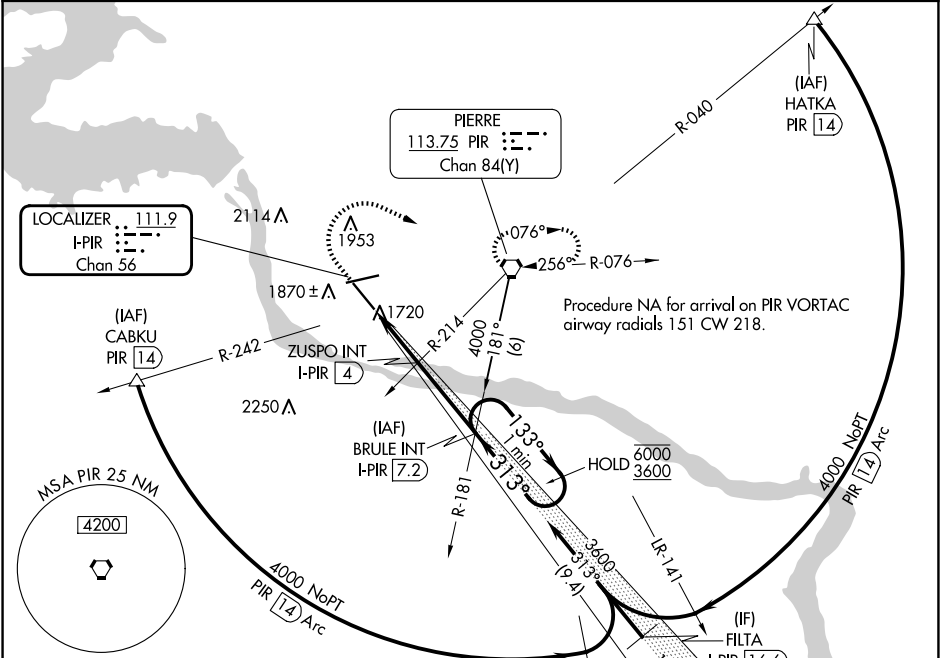


LOC/DME I-PIR	APP CRS	Rwy ldg	6900
111.9	313°	TDZE	1720
Chan 56		Apt Elev	1744

ILS or LOC RWY 31

PIERRE RGNL (PIR)

<div><div><div><div></div><div></div><div></div></div><div></div></div></div> <div>For inop ALS, increase S-LOC 31 Cat C/D visibility to ¾ SM.</div>	<div><div><div>MALS</div><div>AS</div></div><div><div></div></div></div>	MISSED APPROACH: Climb to 2400 then climbing right turn to 4000 direct PIR VORTAC and hold, continue climb-in-hold to 4000.	
ASOS 119.025	MINNEAPOLIS CENTER 125.1 269.1	CTAF 122.70	UNICOM 122.95



NC-1, 07 AUG 2025 to 04 SEP 2025

NC-1, 07 AUG 2025 to 04 SEP 2025