

MOUNTAIN HOME, IDAHO

TACAN Z RWY 30

TACAN MUO
Chan 87

APCH CRS
295°

Rwy Idg	13,510
TDZE	2996
Arpt Elev	2996

[USAF]

MOUNTAIN HOME AFB (KMUO)

T * When ALS inop, increase CAT AB RVR to 55, vis to 1 mile, CAT CDE vis to 1½ miles.
** Circling not authorized NE of Rwy 12-30.

ALSF-1

MISSED APPROACH: Climb to 10,000 on MUO TACAN R-309 to ZOVRTA/5 DME, and then turn left on heading 169° to intercept MUO R-229 to MSTNG/12 DME and hold, continue climb-in-hold to 10,000.

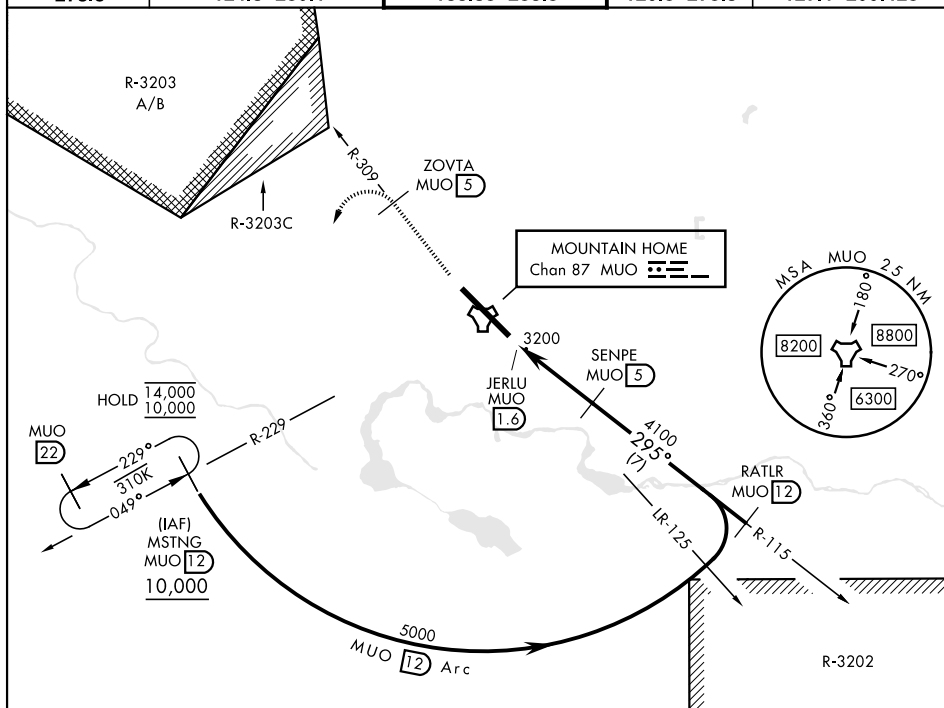
ATIS
273.5

MOUNTAIN HOME APP CON
124.8 259.1

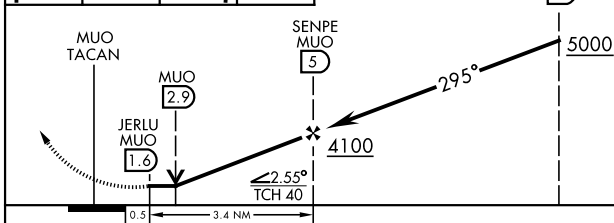
MOUNTAIN HOME TOWER
133.85 253.5

GND CON	
120.5	275.8

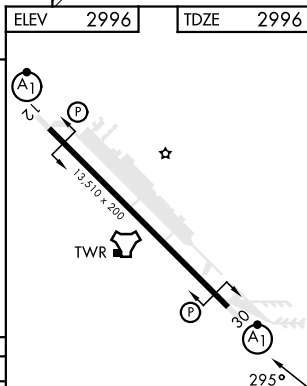
CLNC DEL
127.1 290.425



EMERG SAFE ALT 100 NM 14,100



CATEGORY	A	B	C	D	E
S-30 *	3520/24 524 (600-½)		3520/55 524 (600-1)		
C CIRCLING **	3520-1 524 (600-1)		3520-1½ 524 (600-1½)	3560-2 564 (600-2)	3700-2½ 704 (800-2½)



MOUNTAIN HOME, IDAHO

43°03'N-115°52'W

MOUNTAIN HOME AFB (KMUO)

Amdt 4 12JUN25

TACAN Z RWY 30

NW-1, 07 AUG 2025 to 04 SEP 2025

NW-1, 07 AUG 2025 to 04 SEP 2025