

TACAN Z RWY 12

TACAN MUO Chan 87	APCH CRS 129°	Rwy Ldg TDZE 2986 Arprt Elev 2996
-------------------	---------------	-----------------------------------

[USAF]

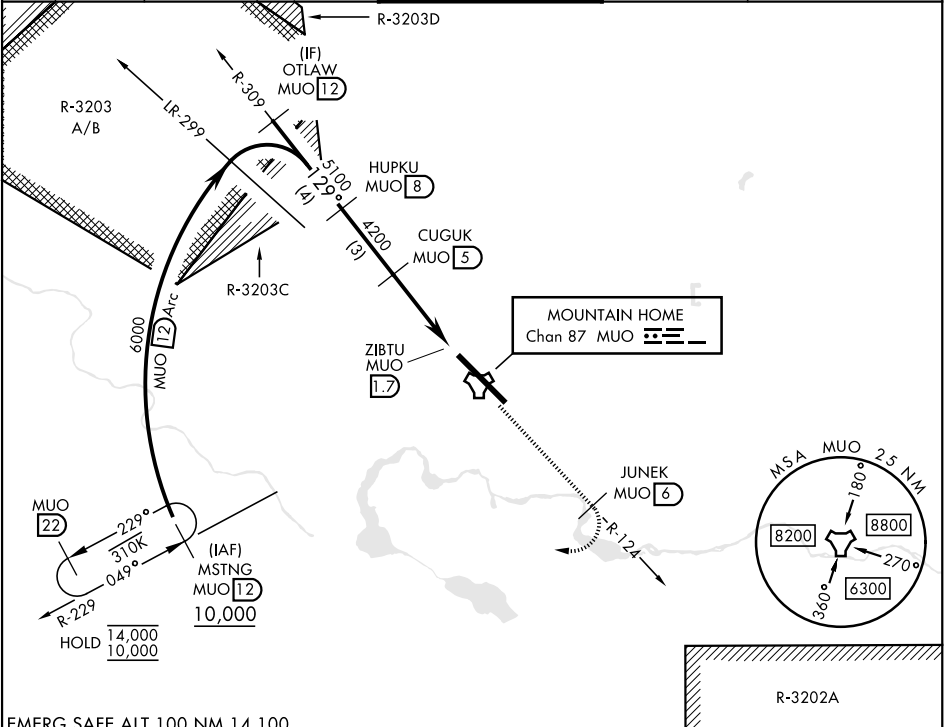
MOUNTAIN HOME AFB (KMUO)

⚠ * When ALS inop, increase CAT AB RVR to 55 and vis to 1 mile, CAT CDE vis to 1½ miles.
** Circling not authorized NE of Rwy 12-30.

ALSF-1 (A1)

MISSED APPROACH: Climb to 10,000 on MUO TACAN R-124 to JUNEK/6 DME, then turn right on heading 289° to intercept MUO R-229 to MSTNG/12 DME and hold. Continue climb in hold to 10,000.

ATIS 273.5	MOUNTAIN HOME APP CON 124.8 259.1	MOUNTAIN HOME TOWER 133.85 253.5	GND CON 120.5 275.8	CLNC DEL 127.1 290.425
------------	-----------------------------------	----------------------------------	---------------------	------------------------



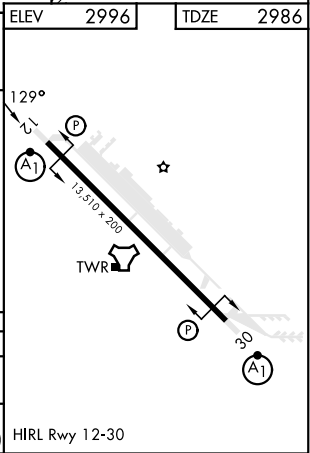
EMERG SAFE ALT 100 NM 14,100

VGSI and descent angles not coincident (VGSI Angle 2.50/TCH 41).

OTLAW MUO 12, HUPKU MUO 8, CUGUK MUO 5, JUNEK MUO 6, MSTNG MUO 12, MUO R-124, MUO R-229, MUO TACAN, ZIBTU MUO 1.7

6000, 5100, 4200, 14,000, 10,000, 129°, 2.91°, TCH 41, 3.3 NM, 0.5

CATEGORY	A	B	C	D	E
S-12 *	3520/24	534 (600-½)	3520/55	534 (600-1)	
CIRCLING **	3520-1	524 (600-1)	3520-1½ 524 (600-1½)	3560-2 564 (600-2)	3700-2½ 704 (800-2½)



TACAN Z RWY 12

NW-1, 07 AUG 2025 to 04 SEP 2025

NW-1, 07 AUG 2025 to 04 SEP 2025