

ILS or LOC Z RWY 30

LOC I-BRN 111.7	APCH CRS 302°	Rwy Idg 13,510 TDZE 2996 Arpt Elev 2996
---------------------------	-------------------------	--

[USAF]

MOUNTAIN HOME AFB (KMUO)

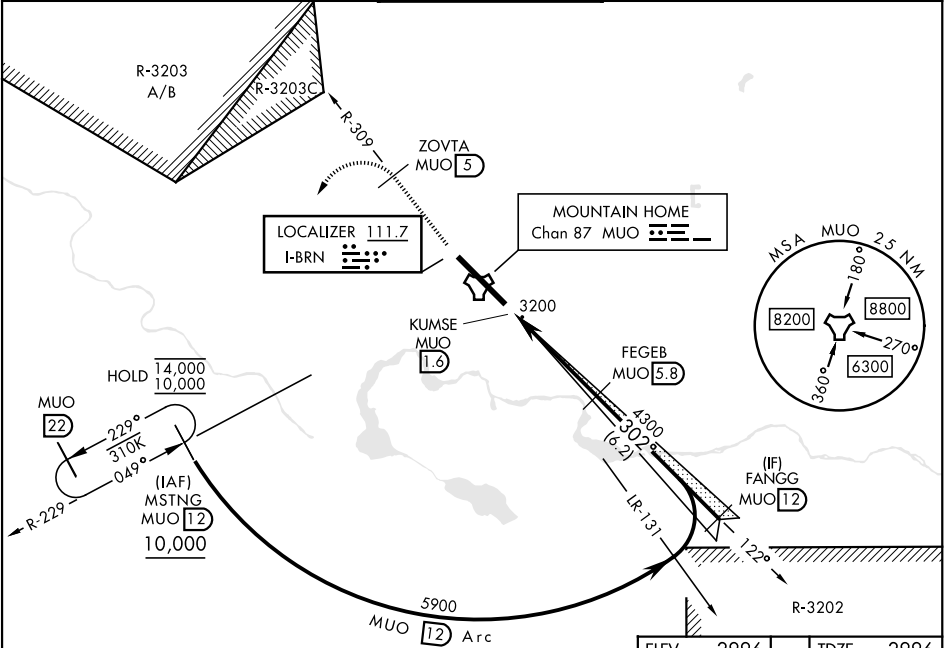
RADAR or DME required.

- ▲ * When ALS inop, increase RVR to 40 and vis to ¾ mile.
- ** When ALS inop, increase CAT AB RVR to 55 and vis to 1 mile, CAT CDE vis to 1¾ miles.
- *** Circling not authorized NE of Rwy 12-30.



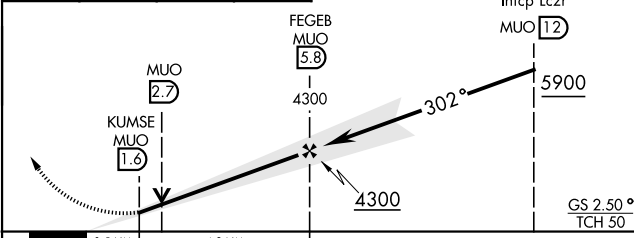
MISSED APPROACH: Climb to 10,000 via MUO R-309 to ZOVRTA/5 DME, turn left on hdg 169° to intercept MUO R-229 to MSTNG/12 DME and hold, continue climb-in-hold to 10,000.

ATIS 273.5	MOUNTAIN HOME APP CON 124.8 259.1	MOUNTAIN HOME TOWER 133.85 253.5	GND CON 120.5 275.8	CLNC DEL 127.1 290.425
----------------------	---	--	-------------------------------	----------------------------------



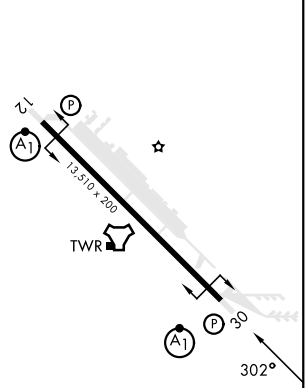
EMERG SAFE ALT 100 NM 14,100

10,000 MUO R-309	ZOVRTA MUO 5	MSTNG MUO 12	VGSI and ILS glidepath not coincident (VGSI Angle 2.50/TCH 40).
------------------	--------------	--------------	---



CATEGORY	A	B	C	D	E
S-ILS 30 *	3196/24 200 (200-½)				
S-LOC 30 **	3480/24	484 (500-½)	3480/50	484 (500-1)	
CIRCLING ***	3520-1	524 (600-1)	3520-1½ 524 (600-1½)	3560-2 564 (600-2)	3700-2½ 704 (800-2½)

ELEV 2996	TDZE 2996
-----------	-----------



HIRL Rwy 12-30					
FAF to MAP 4.2 NM					
Knots	60	90	120	150	180
Min:Sec	4:12	2:48	2:06	1:41	1:24

ILS or LOC Z RWY 30

NW-1, 07 AUG 2025 to 04 SEP 2025

NW-1, 07 AUG 2025 to 04 SEP 2025