

## ILS or LOC Z RWY 12

LOC I-MUO <b><u>110.3</u></b>	APCH CRS <b>122°</b>	Rwy Idg <b>13,510</b> TDZE <b>2986</b> Arpt Elev <b>2996</b>
----------------------------------	-------------------------	--

[USAF]

MOUNTAIN HOME AFB (KMUO)

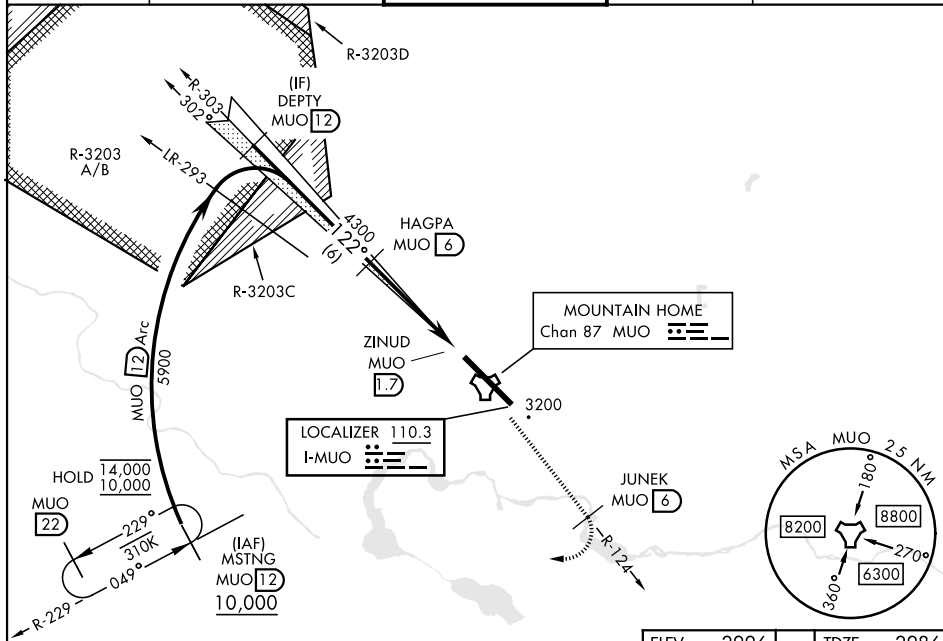
RADAR or DME required

ALSF-1



**MISSED APPROACH:** Climb to 10,000 on MUO TACAN R-124 to JUNEK/6 DME, then turn right on heading 289° to intercept MUO R-229 to MSTNG/12 DME and hold. Continue climb in hold to 10,000.

ATIS 273.5	MOUNTAIN HOME APP CON 124.8 259.1	MOUNTAIN HOME TOWER 133.85 253.5	GND CON 120.5 275.8	CLNC DEL 127.1 290.425
---------------	--------------------------------------	-------------------------------------	------------------------	---------------------------

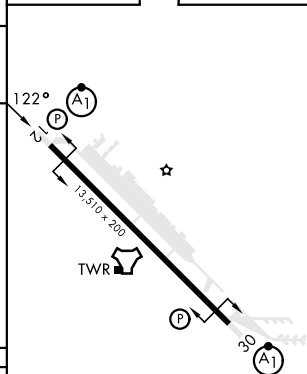
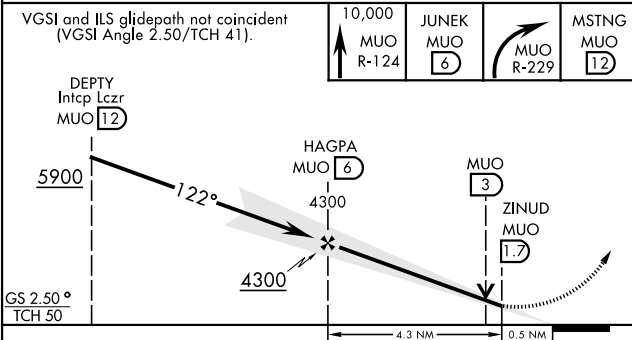


EMERG SAFE ALT 100 NM 14,100

ELEV	2996
------	------

TDZE	2986
------	------

VGSI and ILS glidepath not coincident  
(VGSI Angle 2.50/TCH 41).



CATEGORY	A	B	C	D	E
S-ILS 12 *	3186/24		200	(200-½)	
S-LOC 12 **	3500/24	514 (600-½)	3500/55	514	(600-1)
*** C CIRCLING	3520-1	524 (600-1)	3520-1½ 524 (600-1½)	3560-2 564 (600-2)	3700-2½ 704 (800-2½)

HIRL Rwy 12-30

FAF to MAP 4.3 NM

Knots	60	90	120	150	180
Min:Sec	4:18	2:52	2:09	1:43	1:26

MOUNTAIN HOME, IDAHO

43°03'N-115°52'W

MOUNTAIN HOME AFB (KMUO)

Amdt 5 12JUN25

ILS or LOC Z RWY 12

NW-1, 07 AUG 2025 to 04 SEP 2025

NW-1, 07 AUG 2025 to 04 SEP 2025