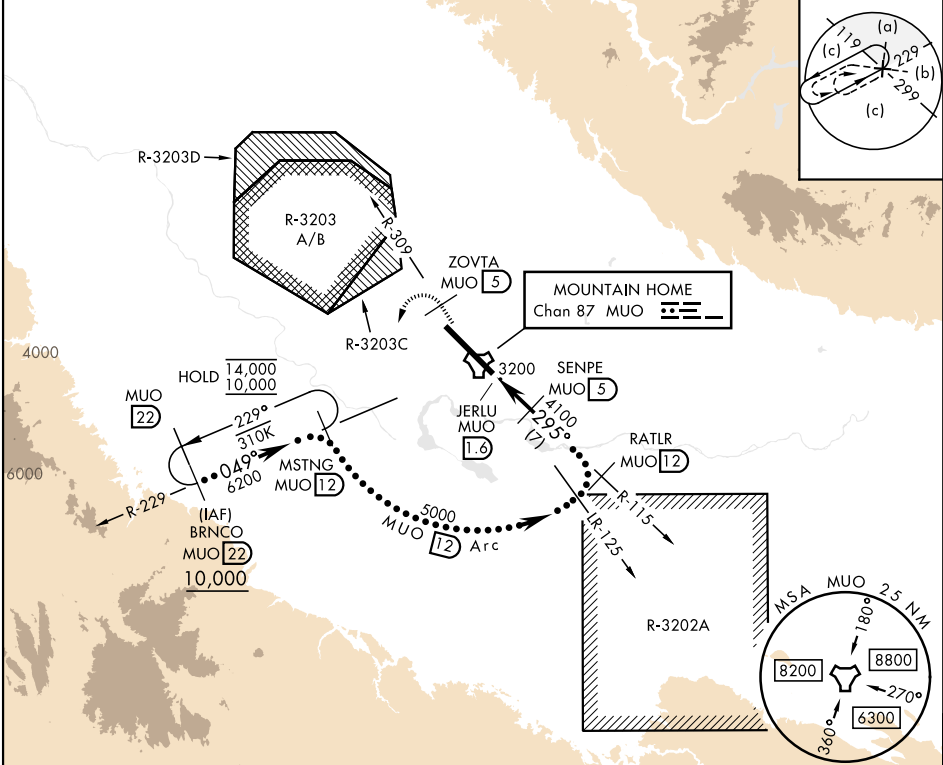


TACAN Chan 87	APCH CRS 295°	Rwy ldg TDZE 2996 Arpt Elev 2996	[USAF]	MOUNTAIN HOME AFB (KMUO)
*When ALS inop, increase CAT CDE vis to 1½ miles. **Circling not authorized NE of Rwy 12-30.				
ALSF-1		MISSED APPROACH: Climb to 10,000 on MUO TACAN R-309 to ZOVRTA/5 DME, and then turn left heading 169° to intercept MUO R-229 to MSTNG/12 DME and hold, continue climb in hold to 10,000.		

ATIS 273.5	MOUNTAIN HOME APP CON 124.8 259.1	MOUNTAIN HOME TOWER 133.85 253.5	GND CON 120.5 275.8	CLNC DEL 127.1 290.425
---------------	--------------------------------------	-------------------------------------	------------------------	---------------------------



EMERG SAFE ALT 100 NM 14,100			ELEV 2996	TDZE 2996
MUO R-309 10,000	ZOVRTA MUO 5	MUO R-229	MSTNG MUO 12	RATLR MUO 12
MUO TACAN	MUO 2.9	JERLU MUO 1.6	SENPE MUO 5	
4100				
2.55° TCH 40				
0.5 3.4 NM				
CATEGORY	C	D	E	
S-30 *	3520/55	524 (600-1)		
CIRCLING **	3520-1½ 524 (600-1½)	3560-2 564 (600-2)	3700-2½ 704 (800-2½)	
HIRL Rwy 12-30				