

TACAN MUO

Chan 87

APCH CRS

129°

Rwy Idg

13,510

TDZE

2986

Arprt Elev

2996

[USAF]

MOUNTAIN HOME AFB (KMUO)

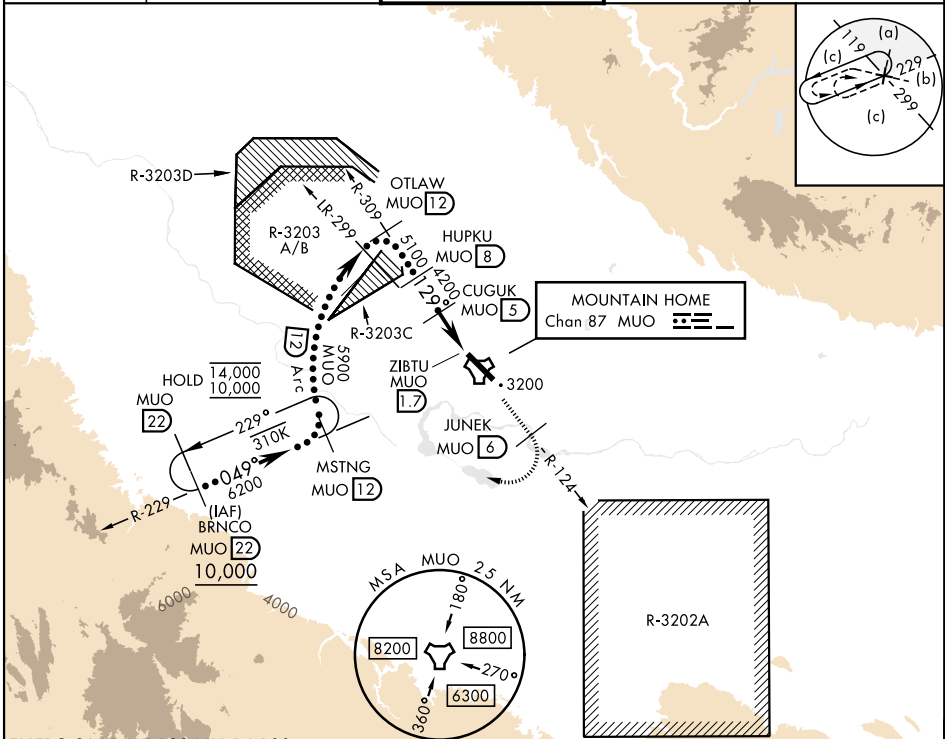
✚

* When ALS inop, increase CAT CDE vis to 1½ miles.
** Circling not authorized NE of Rwy 12-30.

ALSF-1

MISSED APPROACH: Climb to 10,000 on MUO TACAN R-124 to JUNEK/6 DME, then turn right on heading 289° to intercept MUO R-229 to MSTNG/12 DME and hold. Continue climb in hold to 10,000.

ATIS 273.5	MOUNTAIN HOME APP CON 124.8 259.1	MOUNTAIN HOME TOWER 133.85 253.5	GND CON 120.5 275.8	CLNC DEL 127.1 290.425
---------------	--------------------------------------	-------------------------------------	------------------------	---------------------------



EMERG SAFE ALT 100 NM 14,100

VGSI and descent angles not coincident (VGSI Angle 2.50/TCH 41).

OTLAW MUO 12

HUPKU MUO 8

CUGUK MUO 5

MUO TACAN

MUO ZIBTU 1.7

MUO JUNEK 6

MUO R-124

MUO R-229

MUO R-124

MUO R-229

MUO R-124

MUO R-229

5900

5100

4200

2.91°

TCH 41

3.3 NM

0.5

ELEV	2996	TDZE	2986
------	------	------	------

CATEGORY	C	D	E
S-12 *	3520/55	534 (600-1)	
CIRCLING **	3520-1½ 524 (600-1½)	3560-2 564 (600-2)	3700-2½ 704 (800-2½)

129°

(A1)

13.310 x 300

TWR

30

(A1)

HIRL Rwy 12-30