

STRRM ONE DEPARTURE (RNAV)

AL-322 (FAA)

PHOENIX SKY HARBOR INTL (PHX)

PHOENIX, ARIZONA

TOP ALTITUDE:
8000

D-ATIS
127.575
CLNC DEL
118.1 269.2
CPDLC

GND CON

2 (NORTH)

2 (SOUTH)

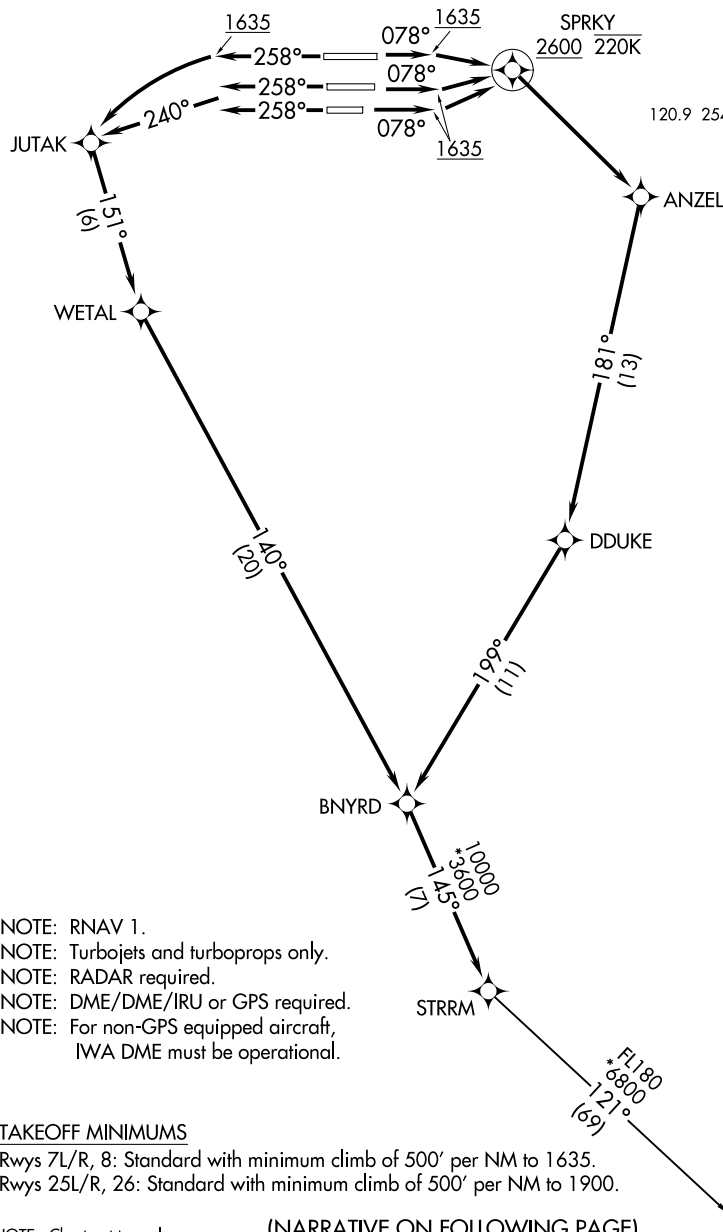
PHOENIX TOWER

PHOENIX TOWER
110.7 270.0 (D: 0.24)

278.8 (Rwy 8-26)
71.05B, 7B.051)4.3 (Rwys 7L-25R, 7R-25L)
 PHOTO NUMBER 3011

PHOENIX DEP CON

126.8 269.6



NOTE: RNAV 1.

NOTE: Turbojets and turboprops only.

NOTE: RADAR required.

NOTE: DME/DME/IRU or GPS required.

NOTE: For non-GPS equipped aircraft,
IWA DME must be operational.

TAKEOFF MINIMUMS

Rwys 7L/R, 8: Standard with minimum climb of 500' per NM to 1635.

Rwys 25L/R, 26: Standard with minimum climb of 500' per NM to 1900.

NOTE: Chart not to scale.

(NARRATIVE ON FOLLOWING PAGE)

STRRM ONE DEPARTURE (RNAV)

(STRRM1.STRRM) 24MAY18

PHOENIX, ARIZONA

PHOENIX SKY HARBOR INTL (PHX)

SW-4, 07 AUG 2025 to 04 SEP 2025

SW-4, 07 AUG 2025 to 04 SEP 2025