

| | | |
|--|------------------------|---|
| WAAS CH 73011 W07B | APP CRS 078° | Rwy Idg TDZE 1116 Apt Elev 1135 |
|--|------------------------|---|

RNAV (GPS) Y RWY 7R

PHOENIX SKY HARBOR INTL (PHX)

RNP APCH - GPS.

▼

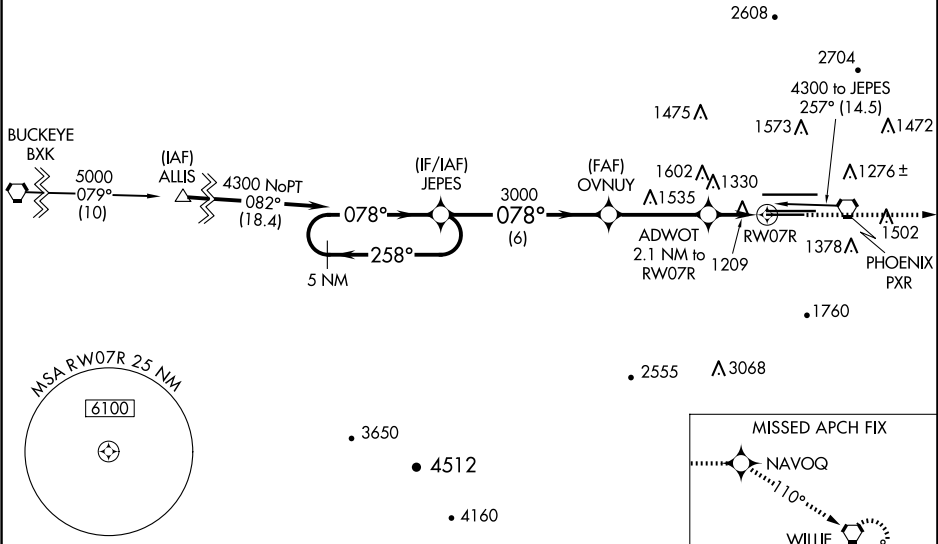
▲

For inop ALS, increase visibility LPV all Cats to ¾ SM, LNAV/VNAV all Cats to 1½ SM, LNAV Cats A/B to 1 SM and C/D to 1¾ SM. For uncompensated Baro-VNAV systems, LNAV/VNAV NA below -17°C or above 46°C. Rwy 7R helicopter visibility reduction below ¾ SM NA. Simultaneous approach authorized. Use of FD or AP providing RNAV track guidance required during simultaneous operations. LNAV procedure NA during simultaneous operations.

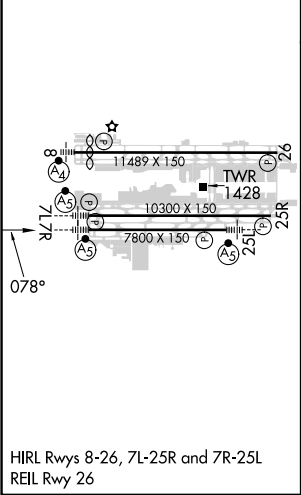
MALSR

MISSED APPROACH: Climb to 5000 direct NAVOQ and via 110° track to IWA VORTAC and hold.

| | | | | | |
|--------------------------|--|---|---|--------------------------------|-------|
| D-ATIS 127.575 | PHOENIX APP CON 128.65 353.9 | PHOENIX TOWER 118.7 278.8 (Rwy 8-26) 120.9 254.3 (Rwy 7L-25R, 7R-25L) | GND CON 119.75 269.2 (N) 132.55 269.2 (S) | CLNC DEL 118.1 269.2 | CPDLC |
|--------------------------|--|---|---|--------------------------------|-------|



| | | |
|-----------|----------|-----------|
| ELEV 1135 | D | TDZE 1116 |
|-----------|----------|-----------|



| | | | | |
|--|--------|-------------|--------------------------|-------------------------|
| VGSI and RNAV glidepath not coincident (VGSI Angle 3.00/TCH 70). | | | | |
| 5 NM Holding Pattern | | | | |
| GP 3.00° TCH 57 | | | | |
| 6 NM | | | | |
| 3.6 NM | | | | |
| 0.9 | | | | |
| 1.2 NM | | | | |
| CATEGORY | A | B | C | D |
| LPV DA | | 1390-¾ | 274 (300-¾) | |
| LNAV/VNAV DA | | 1520-1 | 404 (400-1) | |
| LNAV MDA | 1580-¾ | 464 (500-¾) | 1580-1 | 464 (500-1) |
| CIRCLING | 1740-1 | 605 (700-1) | 2040-2¾ 905 (1000-2¾) | 2560-3 1425 (1500-3) |