

| | | |
|--|------------------------|--|
| WAAS CH 70321 W26A | APP CRS 258° | Rwy Idg 11489 TDZE 1135 Apt Elev 1135 |
|--|------------------------|--|

RNAV (GPS) Y RWY 26

PHOENIX SKY HARBOR INTL (PHX)

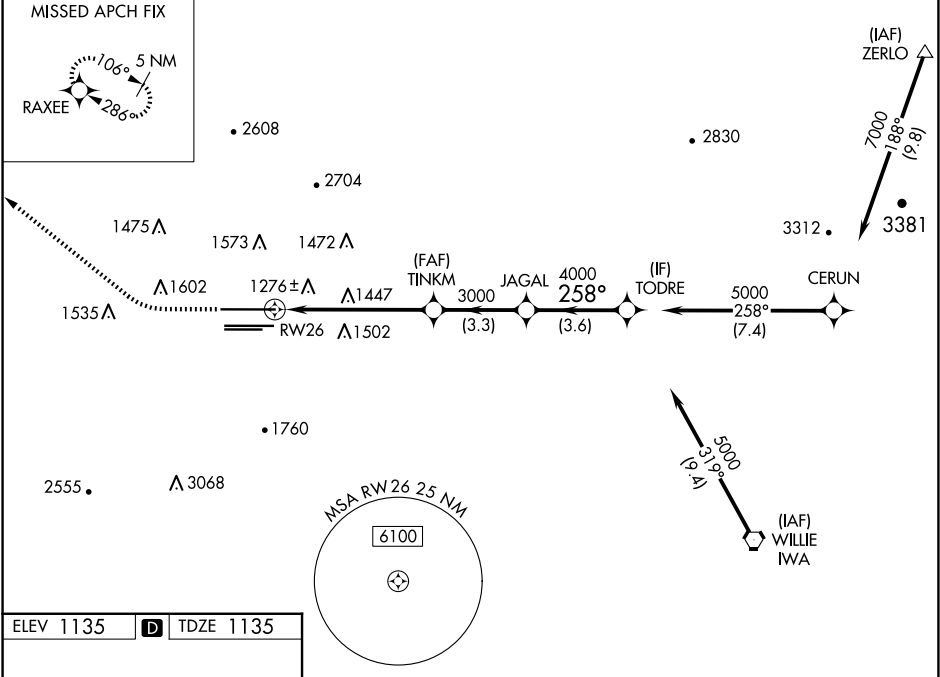
RNP APCH-GPS.

⚠

Simultaneous approach authorized. LNAV procedure NA during simultaneous operations. Use of FD or AP required during simultaneous operations. For uncompensated Baro-VNAV systems, procedure NA below 2°C or above 54°C.

MISSED APPROACH: Climb to 1700 then climbing right turn to 6000 direct RAXEE and hold.

| | | | | | |
|--------------------------|--|---|---|--------------------------------|-------|
| D-ATIS 127.575 | PHOENIX APP CON 128.65 353.9 | PHOENIX TOWER 118.7 278.8 (Rwy 8-26) 120.9 254.3 (Rwy 7L-25R, 7R-25L) | GND CON 119.75 269.2 (N) 132.55 269.2 (S) | CLNC DEL 118.1 269.2 | CPDLC |
|--------------------------|--|---|---|--------------------------------|-------|



| | | | | | |
|--------------|------|-----------|--|------------------------------|-------------------------|
| 1700 | 6000 | RAXEE | VGSi and RNAV glidepath not coincident (VGSi Angle 3.00°/TCH 71°). | | TODRE |
| | | | | | |
| CATEGORY | | A | B | C | D |
| LPV DA | | 1390-3⁄4 | | 255 (300-3⁄4) | |
| LNAV/VNAV DA | | 1581-13⁄8 | | 446 (500-13⁄8) | |
| LNAV MDA | | 1700-1 | 565 (600-1) | 1700-15⁄8 | 565 (600-15⁄8) |
| CIRCLING | | 1740-1 | 605 (700-1) | 2040-23⁄4 905 (1000-23⁄4) | 2340-3 1205 (1300-3) |