

| | | |
|--|------------------------|---|
| WAAS CH 82211 W25B | APP CRS 258° | Rwy Idg 7800 TDZE 1126 Apt Elev 1135 |
|--|------------------------|---|

RNAV (GPS) Y RWY 25L

PHOENIX SKY HARBOR INTL (PHX)

RNP APCH-GPS.

T Simultaneous approach authorized. LNAV procedure NA during simultaneous operations. Use of FD or AP required during simultaneous operations. For uncompensated Baro-VNAV systems, procedure NA below 2°C or above 54°C. For inop ALS, increase visibility LPV all Cats to 1 SM, LNAV/VNAV all Cats to 1½ SM and LNAV Cats C/D 1½ SM.

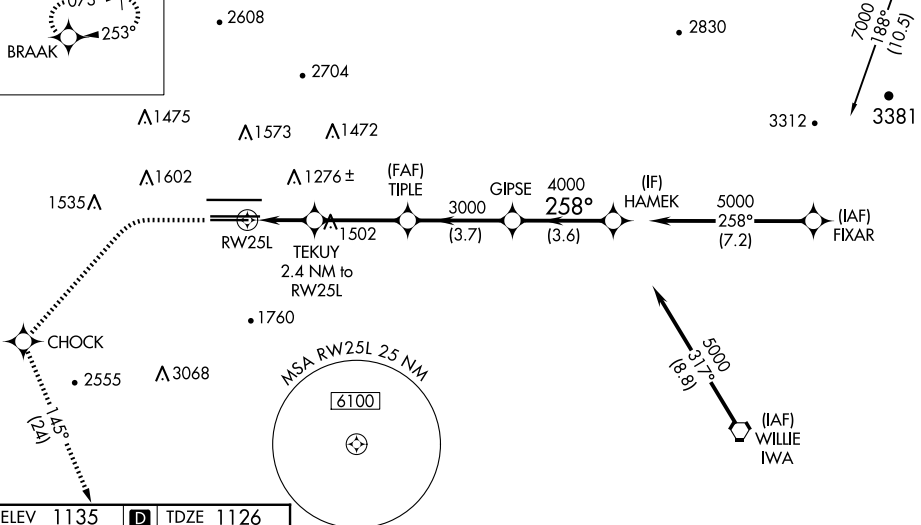
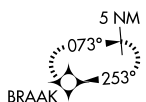
MALS®



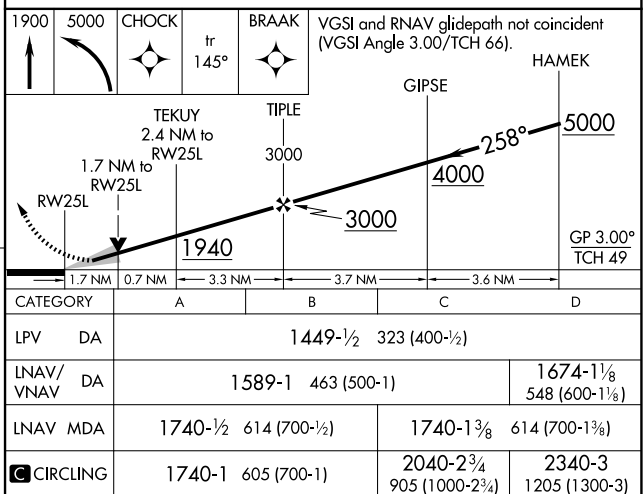
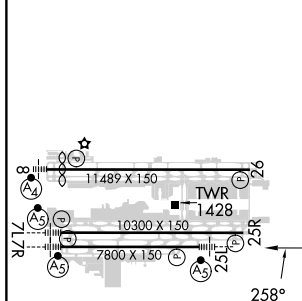
MISSED APPROACH: Climb to 1900 then climbing left turn to 5000 direct CHOCK and on track 145° to BRAAK and hold.


| | | | | | |
|--------------------------|--|---|---|--------------------------------|-------|
| D-ATIS 127.575 | PHOENIX APP CON 128.65 353.9 | PHOENIX TOWER 118.7 278.8 (Rwy 8-26) 120.9 254.3 (Rwy 7L-25R, 7R-25L) | GND CON 119.75 269.2 (N) 132.55 269.2 (S) | CLNC DEL 118.1 269.2 | CPDLC |
|--------------------------|--|---|---|--------------------------------|-------|

MISSED APCH FIX



| | | |
|-----------|----------|-----------|
| ELEV 1135 | D | TDZE 1126 |
|-----------|----------|-----------|



| CATEGORY | | A | B | C | D |
|--|-----|------------------------|---|--------------------------------|-------------------------------|
| LPV | DA | 1449-1/2 323 (400-1/2) | | | |
| RNAV/ RNAV | DA | 1589-1 463 (500-1) | | | 1674-1 1/8 548 (600-1 1/8) |
| RNAV | MDA | 1740-1/2 614 (700-1/2) | | 1740-1 3/8 614 (700-1 3/8) | |
|  CIRCLING | | 1740-1 605 (700-1) | | 2040-2 3/4 905 (1000-2 3/4) | 2340-3 1205 (1300-3) |