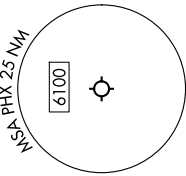
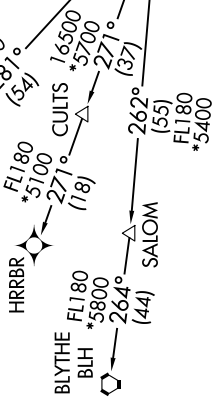


PHOENIX DEP CON
126.8 269.6
D-ATIS
127.575
CLNC DEL
118.1 269.2
GND CON
119.75 269.2 (NORTH)
132.55 269.2 (SOUTH)
PHOENIX TOWER
118.7 278.8 (Rwy 8-26)
120.9 254.3 (Rwys 7L-25R, 7R-25L)

TOP ALTITUDE:
8000



△ WLVRN



NOTE: Turbojets and turboprops only.
NOTE: Aircraft requesting FL220 and below must file BLYTHE Transition.
NOTE: Turbojets landing LAX, file WLVRN Transition.
NOTE: Aircraft landing other than LAX and turboprops landing at LAX: Requesting FL240 and above, file HRRBR Transition.

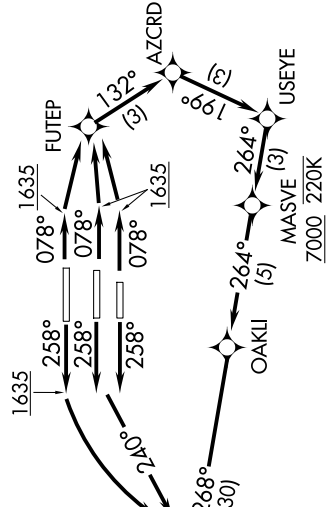
NOTE: Chart not to scale.

DEPARTURE ROUTE DESCRIPTION

TAKEOFF RUNWAYS 7L/R, 8: Climb on heading 078° to 1635, then direct FUTEF, then on track 132° to AZCRD, then on track 199° to USEYE, then on track 264° to cross MASVE at/above 7000 and at/below 220K, then on track 264° to OAKLI, then on track 268° to KEENS, thence. . . .
TAKEOFF RUNWAYS 25L/R: Climb on heading 258° to intercept course 240° to WULKO, then on track 268° to KEENS, thence. . . .
TAKEOFF RUNWAY 26: Climb on heading 258° to 1635, then left turn direct WULKO, then on track 268° to KEENS, thence. . . .
. . . on track 259° to IZZO, then on (transition). Maintain 8000, expect higher altitude 3 minutes after departure.

BLYTHE TRANSITION (KEENS3.BLH)
HRRBR TRANSITION (KEENS3.HRRBR)
WLVRN TRANSITION (KEENS3.WLVRN)

RNAV 1 - DME/DME/IRU or GPS required.
RADAR required.



TAKEOFF MINIMUMS
Rwys 7L/R, 8: Standard.
Rwys 25L/R, 26: Standard with minimum climb of 500'/NM to 1635.