

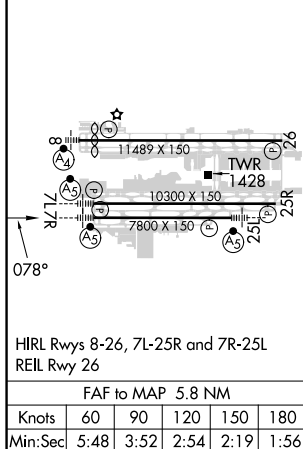
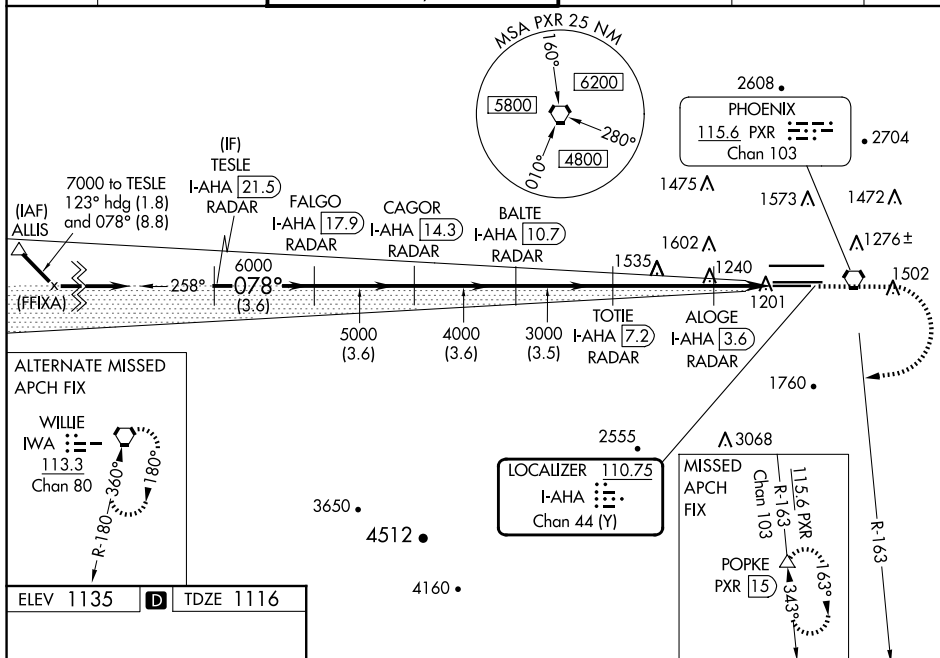
ILS or LOC RWY 7R
PHOENIX SKY HARBOR INTL (PHX)

T Inop table does not apply to S-ILS 7R. Simultaneous approach authorized with ILS or LOC Rwy 8 and RNAV (GPS) Y Rwy 8. Rwy 7R helicopter visibility reduction below $\frac{3}{4}$ SM NA. LOC procedure NA during simultaneous operations. For inop ALS, increase S-LOC 7R visibility Cats A/B to 1 SM and Cats C/D to $1\frac{1}{2}$ SM.



MISSED APPROACH: Climb to 3300 then climbing right turn to 5000 on heading 250° and PXR VORTAC R-163 to POPKE/PXR 15 DME and hold.

| | | | | | |
|---------|-----------------|--|--------------------------------------|-------------|-------|
| D-ATIS | PHOENIX APP CON | PHOENIX TOWER | GND CON | CLNC DEL | CPDLC |
| 127.575 | 128.65 353.9 | 118.7 278.8 (Rwy 8-26) 120.9 254.3 (Rwy 7L-25R, 7R-25L) | 119.75 269.2 (N) 132.55 269.2 (S) | 118.1 269.2 | |



S-ILS 7R

GS 3.00°
TCH 57'

TESLE
I-AHA [21.5] FALGO
RADAR I-AHA [17.9] CAGOR

VGSI and ILS glidepath not coincident
(VGSI Angle 3.00/TCH 70).

3300 5000 PXR R-163 POPKE △

Use I-AHA DME when on the localizer course.

RADAR I-AHA [14.3] BALTE
RADAR I-AHA [10.7] TOTIE
RADAR I-AHA [7.2] ALOGE
RADAR I-AHA [3.6]
RADAR I-AHA [2.5]
I-AHA [1.5]

*LOC only

| CATEGORY | A | B | C | D |
|-------------------|--------------------|--------|--------------------------|-------------------------|
| S-ILS 7R | | 1369-¾ | 253 (300-¾) | |
| S-LOC 7R | | 1520-¾ | 404 (400-¾) | |
| C CIRCLING | 1740-1 605 (700-1) | | 2040-2¾ 905 (1000-2¾) | 2560-3 1425 (1500-3) |

SW-4, 07 AUG 2025 to 04 SEP 2025