

ILS or LOC RWY 26
PHOENIX SKY HARBOR INTL (PHX)

T Simultaneous approach authorized.

MISSED APPROACH: Climb to 2500 then climbing right turn to 5000 on heading 030° and PXR VORTAC R-336 to AVENT/PXR 15.9 DME and hold.

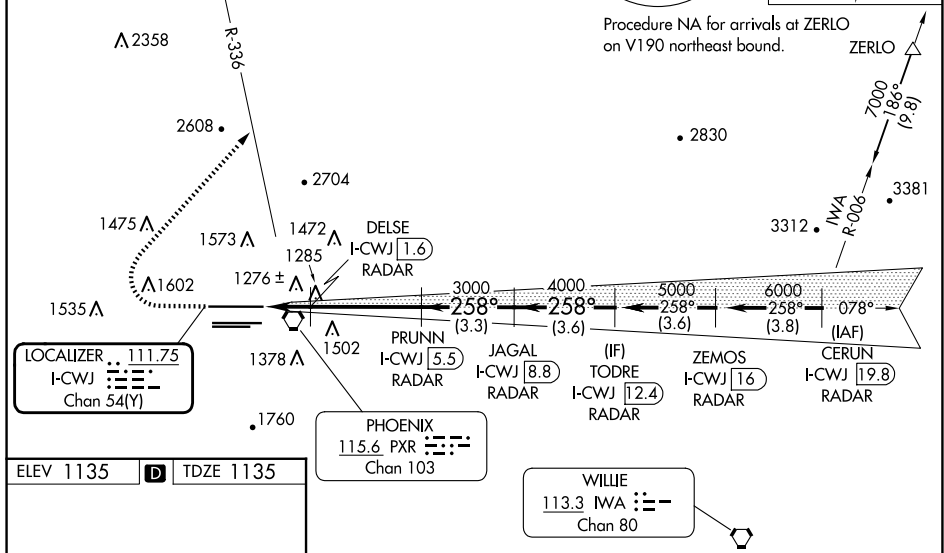


Diagram illustrating the HIRL Runway 26 Instrument Landing System (ILS) and associated navigation aids. The diagram shows the runway layout with various navigation aids (A, AS, R, L, R) and their frequencies. Key data points include:

- HIRL Rwy 8-26, 7L-25R, and 7R-25L
- REIL Rwy 26
- FAF to MAP 5.7 NM
- Knots 60, 90, 120, 150, 180
- Min:Sec 5:42, 3:48, 2:51, 2:17, 1:54
- ILS glidepath (3.00°)
- VGS and ILS glidepath not coincident (VGS Angle 3.00/TCH 71)

Navigation Aid	Frequency	Power	Height
ILS	113.1	50W	1200
VGS	113.1	50W	1200
ILS	113.1	50W	1200
VGS	113.1	50W	1200

Category	A	B	C	D
S-ILS 26	1385- ³ / ₄	250 (300- ³ / ₄)		
S-LOC 26	1580-1	445 (500-1)	1580-1 ³ / ₈	445 (500- ³ / ₈)
CIRCLING	1740-1	605 (700-1)	2040-2 ³ / ₄	2560-3

SW-4, 07 AUG 2025 to 04 SEP 2025