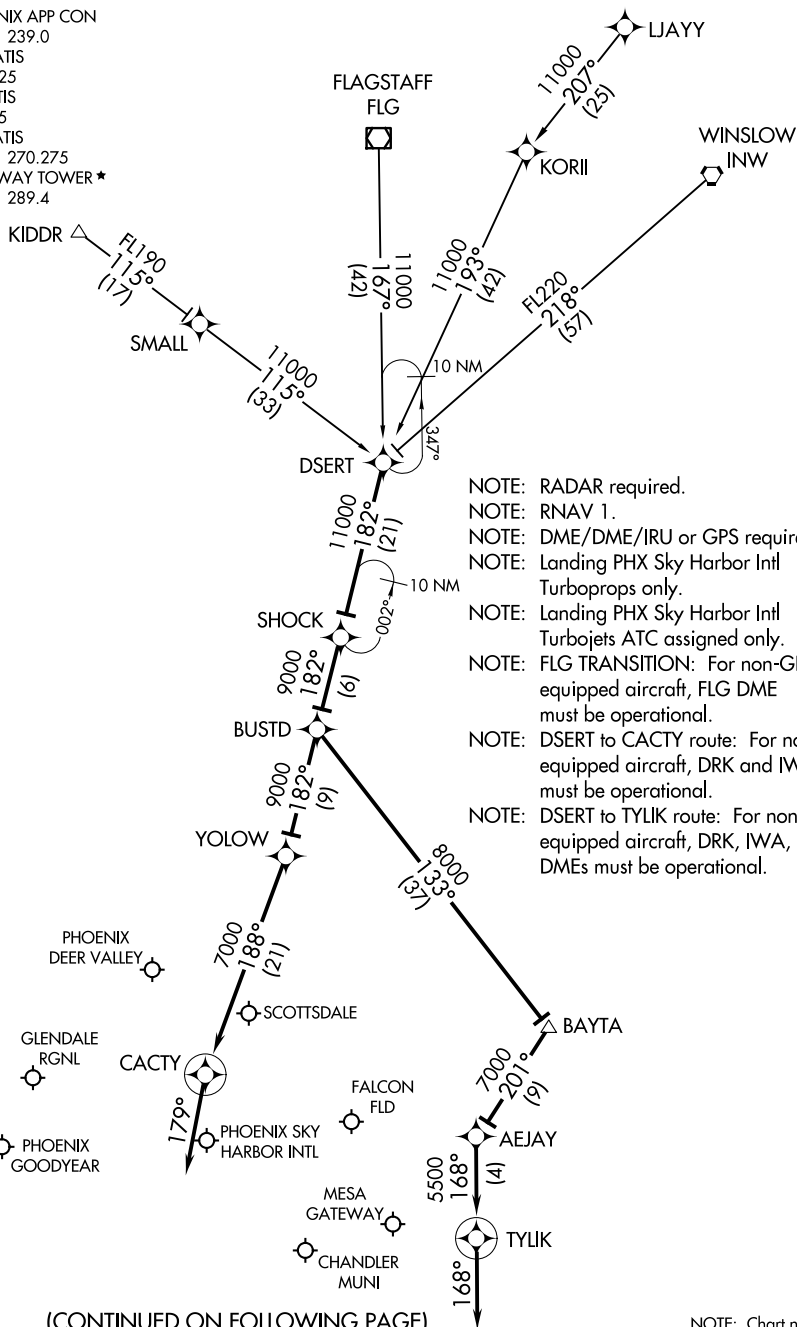


DESERT TWO ARRIVAL (RNAV)

AL-322 (FAA)

PHOENIX, ARIZONA

PHOENIX APP CON
120.7 239.0
CHD ATIS
128.325
FFZ ATIS
118.25
IWA ATIS
133.5 270.275
GATEWAY TOWER★
120.6 289.4



- NOTE: RADAR required.
- NOTE: RNAV 1.
- NOTE: DME/DME/IRU or GPS required.
- NOTE: Landing PHX Sky Harbor Intl
Turboprops only.
- NOTE: Landing PHX Sky Harbor Intl
Turbojets ATC assigned only.
- NOTE: FLG TRANSITION: For non-GPS
equipped aircraft, FLG DME
must be operational.
- NOTE: DSERT to CACTY route: For non-GPS
equipped aircraft, DRK and IWA DMEs
must be operational.
- NOTE: DSERT to TYLIK route: For non-GPS
equipped aircraft, DRK, IWA, and PXR
DMEs must be operational.

(CONTINUED ON FOLLOWING PAGE)

NOTE: Chart not to scale.

DESERT TWO ARRIVAL (RNAV)

PHOENIX, ARIZONA

(DSERT.DSERT2) 13NOV14

SW-4, 07 AUG 2025 to 04 SEP 2025

SW-4, 07 AUG 2025 to 04 SEP 2025